

LOC I-AUO	APP CRS	Rwy Idg	5264
110.1	005°	TDZE	759
		Apt Elev	777

ILS or LOC RWY 36

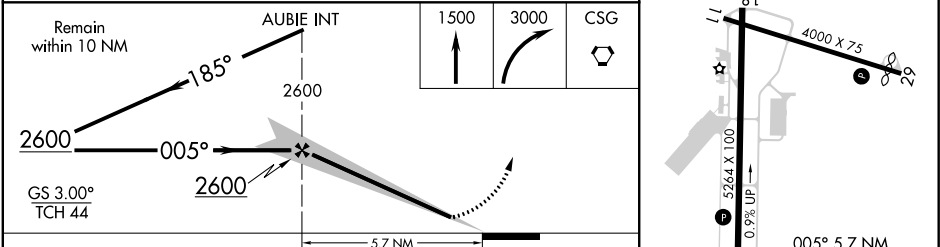
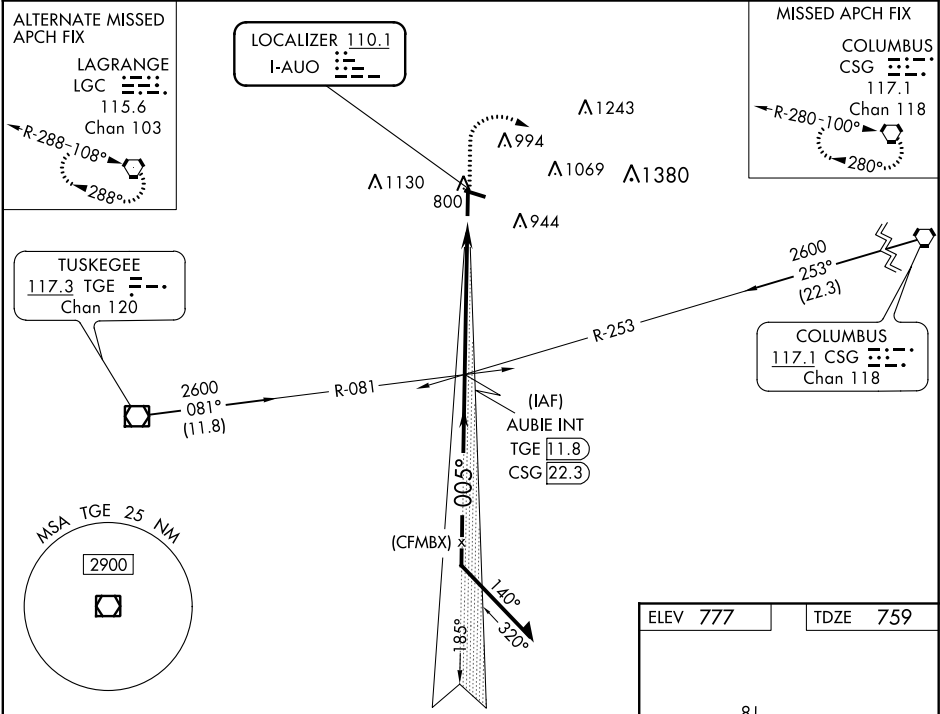
AUBURN UNIVERSITY RGNL (AUO)

When local altimeter setting not received, use Columbus altimeter setting: increase S-ILS 36 DA to 1072 feet and visibility all Cats 1/8 SM; increase all MDA 120 feet and S-LOC 36 Cats C/D visibility 1/4 SM and Circling Cats C/D visibility 1/2 SM. For inop ALS, increase S-LOC 36 all Cats visibility 1/4 SM. For inop ALS, when using Columbus altimeter setting, increase S-ILS 36 all Cats visibility to 1 1/8 SM and S-LOC 36 all Cats visibility to 1 1/8 SM.

MALS F

MISSED APPROACH:  
Climb to 1500 then  
climbing right turn to  
3000 direct CSG  
VORTAC and hold.

AWOS-3PT 132.575	ATLANTA APP CON ★ 125.5 323.1	CLNC DEL 118.7	UNICOM 123.0 (CTAF) 0
---------------------	----------------------------------	-------------------	--------------------------



CATEGORY	A		B		C		D	
S-ILS 36	959-3/4 200 (200-3/4)							
S-LOC 36	1140-3/4 381 (400-3/4)				1140-1 381 (400-1)			
CIRCLING	1280-1 503 (600-1)		1360-1 583 (600-1)		1380-13/4 603 (700-13/4)		1480-21/4 703 (800-21/4)	
	FAF to MAP 5.7 NM							
	Knots		60		90		120 150 180	
Min:Sec		5:42		3:48		2:51 2:17 1:54		

SE-4, 31 DEC 2020 to 28 JAN 2021

SE-4, 31 DEC 2020 to 28 JAN 2021