

NDB

MOQ

263

APP CRS

329°

Rwy Idg

5001

TDZE

41

Apt Elev

46

NDB RWY 33R

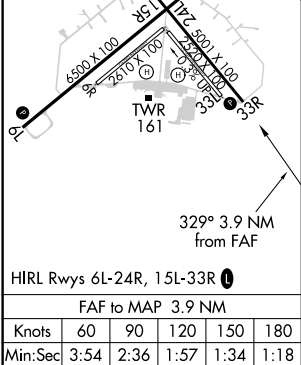
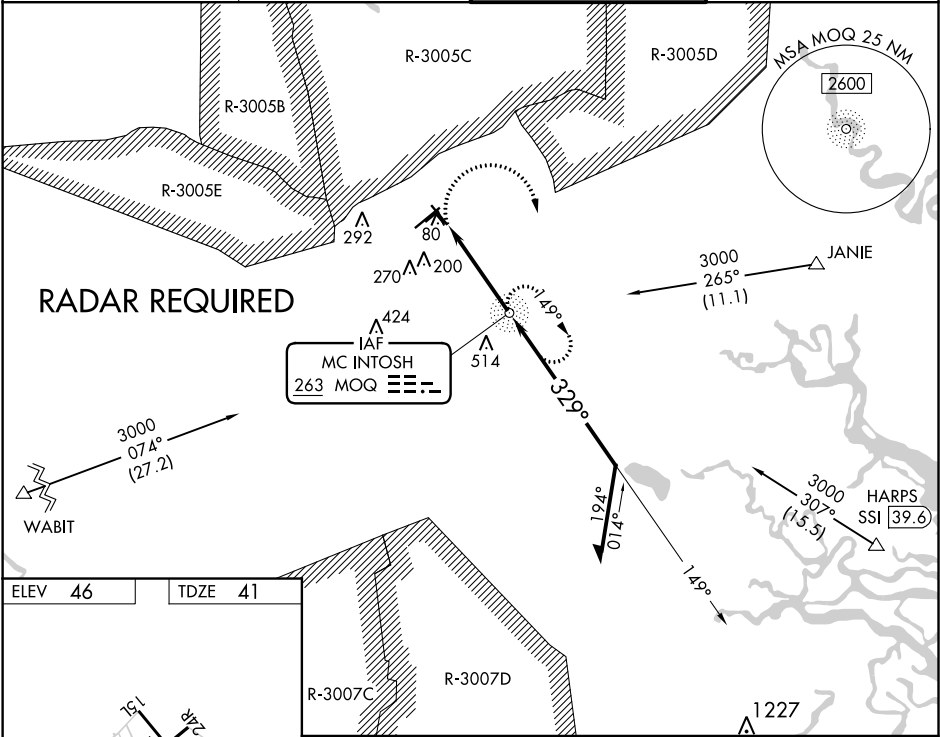
WRIGHT AAF (FORT STEWART)/MIDCOAST RGNL (LHW)

⚠

When local altimeter setting not received, use Savannah/Hilton Head Intl altimeter setting and increase all MDA 60 feet, S-33R Cat C/D visibility 1/8 mile, and Circling Cat C/D visibility 1/4 mile. Procedure NA when R-3005C/D or R-3007C is active and LHW tower is closed. Night landing: Rwy 6R, NA. Circling NA northeast of Rwy 15L/33R. Circling to Rwy 6L, 24R NA at night.

MISSED APPROACH: Climbing right turn to 2300 direct MOQ NDB and hold, continue climb-in-hold to 2300.

| | | | |
|-------------------|------------------------------------|---|--------------------------|
| ATIS ★ 118.475 | SAVANNAH APP CON★ 120.4 353.775 | WRIGHT TOWER ★ 126.25 (CTAF) 0 269.275 | GND CON 121.7 273.575 |
|-------------------|------------------------------------|---|--------------------------|



2300

MOQ

MOQ NDB

Remain within 10 NM

2300

149°

329°

1500

3.43°

TCH 65

3.9 NM

VGSI and descent angles not coincident (VGSI Angle 3.00/TCH 65).

| | | | | |
|----------|----------------------|----------------------|---|--|
| CATEGORY | A | B | C | D |
| S-33R | 500-1 | 459 (500-1) | 500-1 ³ / ₈ | 459 (500-1 ³ / ₈) |
| CIRCLING | 520-1 474 (500-1) | 620-1 574 (600-1) | 660-1 ³ / ₄ 614 (700-1 ³ / ₄) | 680-2 634 (700-2) |