

APCH CRS	Rwy Idg	N/A
069°	TDZE	N/A
	Arpt Elev	294

AL-5176 [USA]

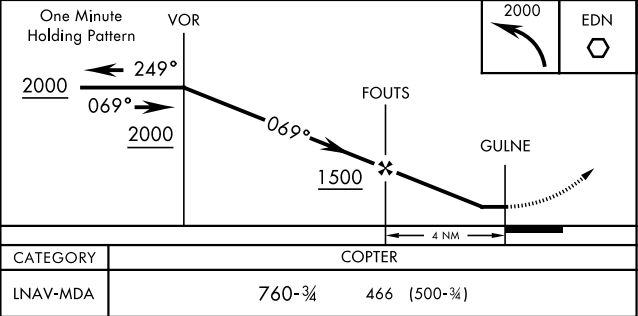
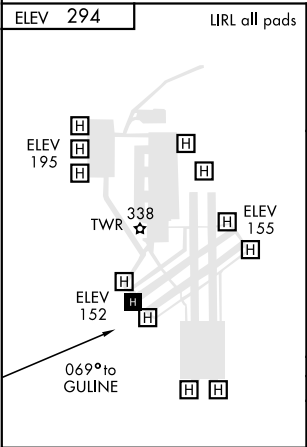
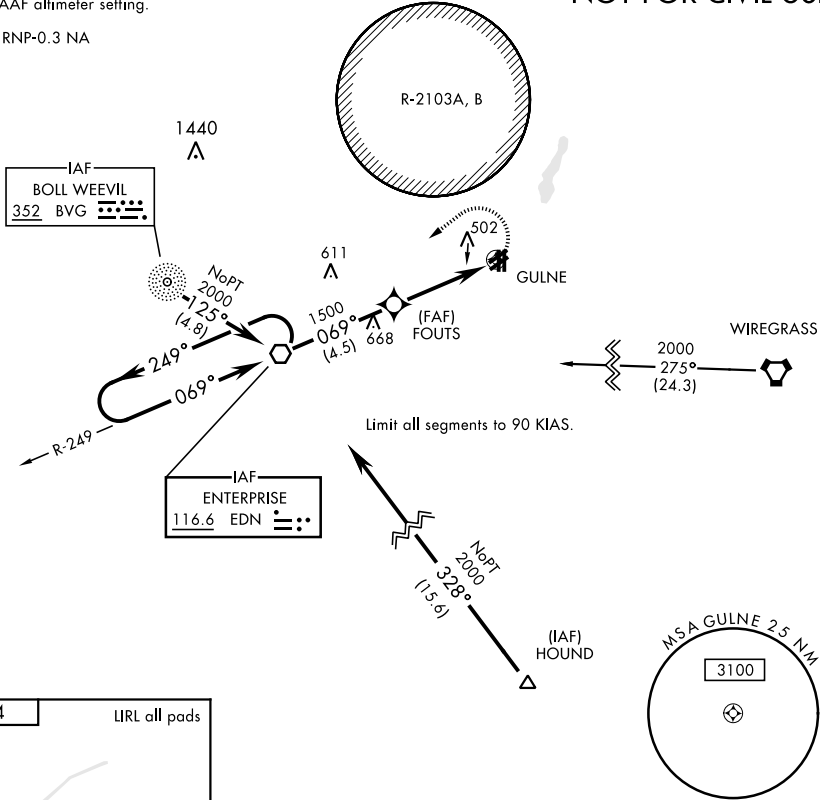
	MISSED APPROACH: Climbing left turn to 2000 direct to EDN VOR and hold.
--	---

ATIS 361.1	CAIRNS APP CON 133.45 239.275	LOWE TOWER ★ 141.3 289.15	GND CON 357.15
---------------	----------------------------------	------------------------------	-------------------

When local altimeter setting not received,  
use Cairns AAF altimeter setting.

NOT FOR CIVIL USE

DME/DME RNP-0.3 NA



SE-4, 31 DEC 2020 to 28 JAN 2021

SE-4, 31 DEC 2020 to 28 JAN 2021