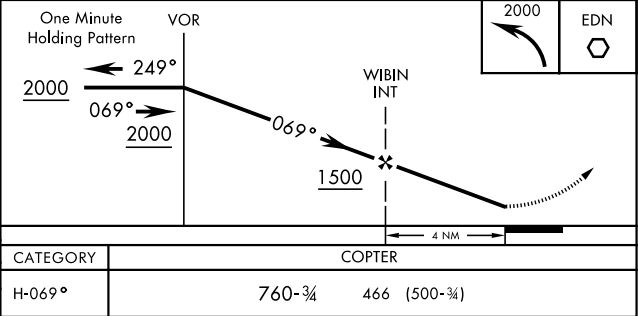
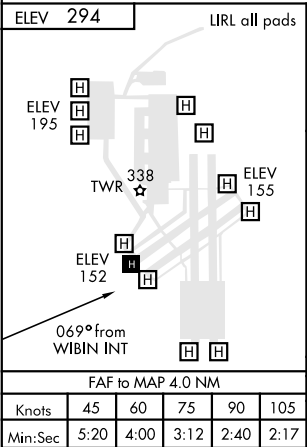
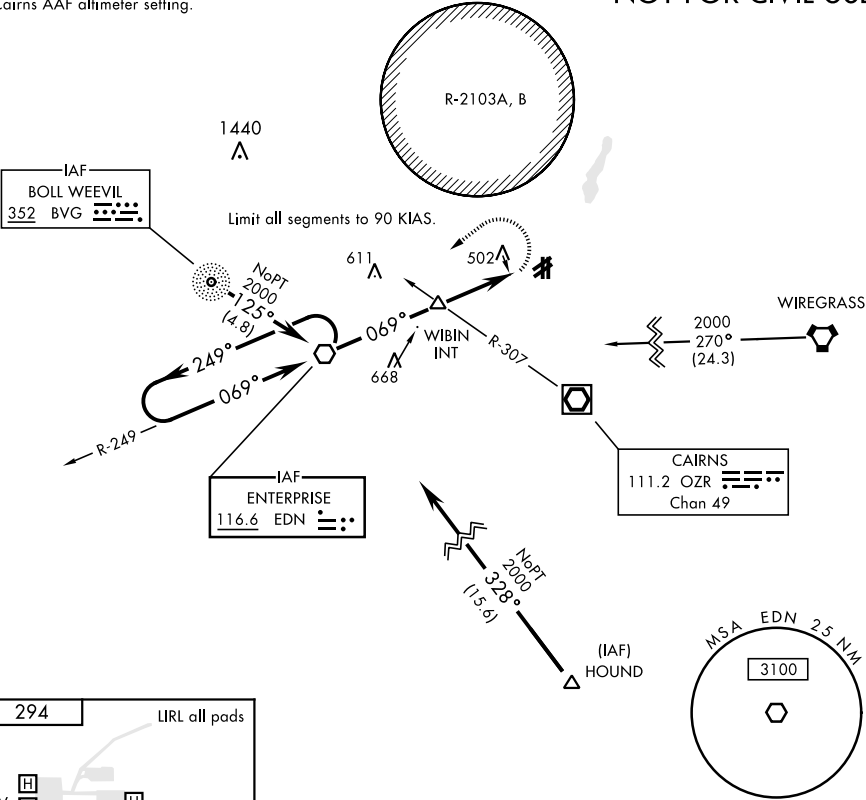


VOR EDN 116.6	APCH CRS 069°	Rwy Idg TDZE Arpt Elev N/A N/A 294	AL-5176 [USA]
MISSED APPROACH: Climbing left turn to 2000 direct to EDN VOR and hold.			
ATIS 361.1	CAIRNS APP CON 133.45 239.275	LOWE TOWER ★ 141.3 289.15	GND CON 357.15

When local altimeter setting not received,
use Cairns AAF altimeter setting.

NOT FOR CIVIL USE



SE-4, 31 DEC 2020 to 28 JAN 2021

SE-4, 31 DEC 2020 to 28 JAN 2021