

FORT RUCKER, ALABAMA

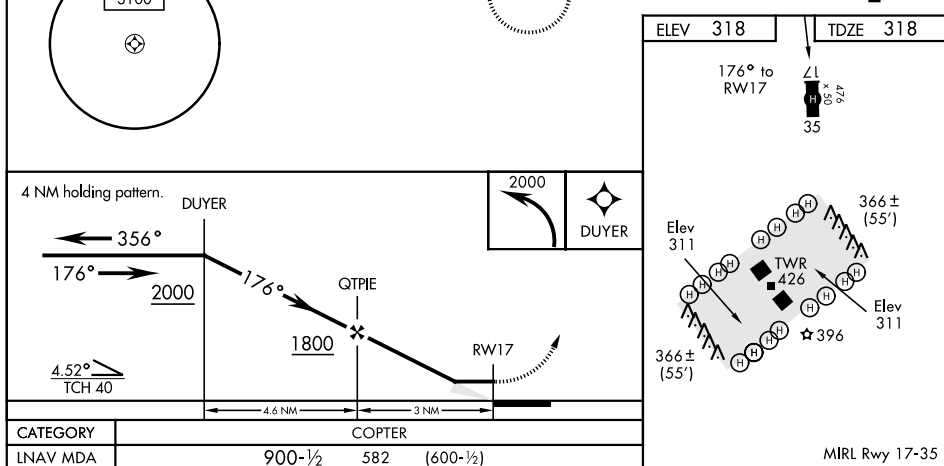
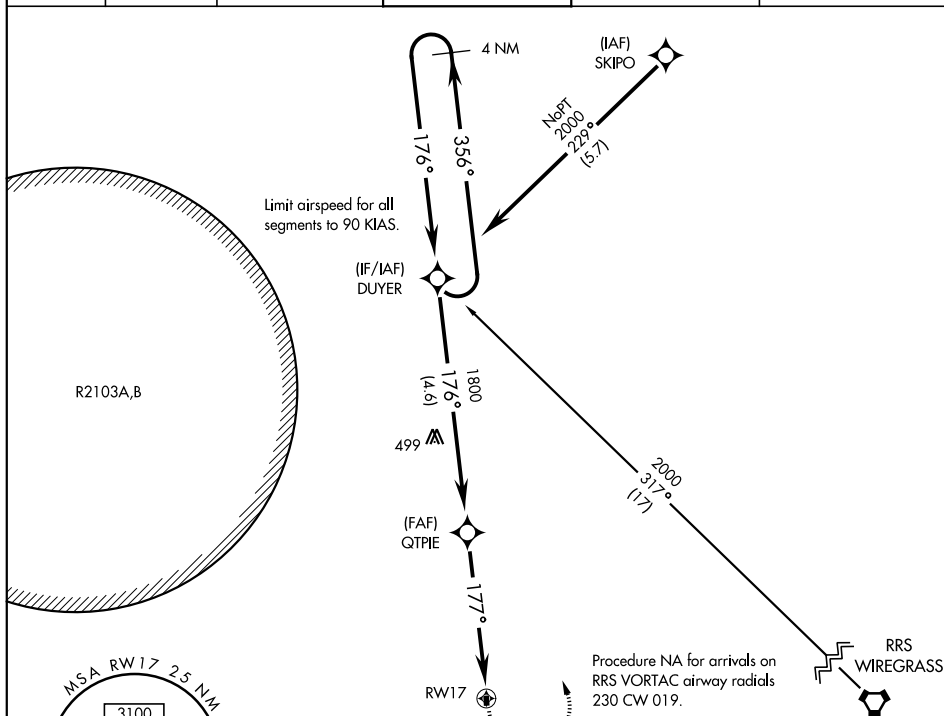
COPTER RNAV (GPS) RWY 17

APCH CRS 176°	Rwy Idg 476
	TDZE 318
	Arpt Elev 318

AL-5183 [USA]

HANCHEY AHP (STRIP) (KHEY)

▽ NA	DME/DME RNP-0.3 NA. Use CAIRNS altimeter setting, when not received, use LOWE altimeter setting.		MISSED APPROACH: Climbing left turn to 2000 direct DUYER and hold.	
ATIS ★ 141.375	LOWE ASOS 118.225	CAIRNS APP CON 125.4 327.125	HANCHEY TOWER ★ 140.5 387.85	GND CON 142.55 225.575
				CAIRNS CLNC DEL 118.075 380.1



FORT RUCKER, ALABAMA

31° 21' N-85° 39' W

HANCHEY AHP (STRIP) (KHEY)

Amdt 2 19JUL18

COPTER RNAV (GPS) RWY 17

SE-4, 31 DEC 2020 to 28 JAN 2021

SE-4, 31 DEC 2020 to 28 JAN 2021