

WAAS
CH **61005**
W21A

APP CRS
207°

Rwy ldg
TDZE **980**
Apt Elev **996**

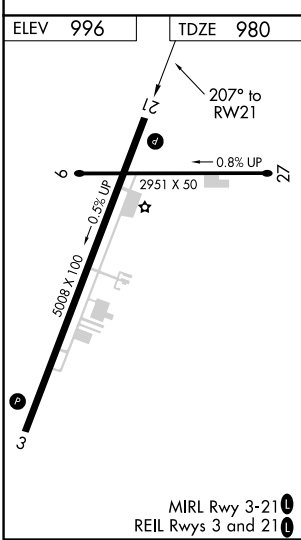
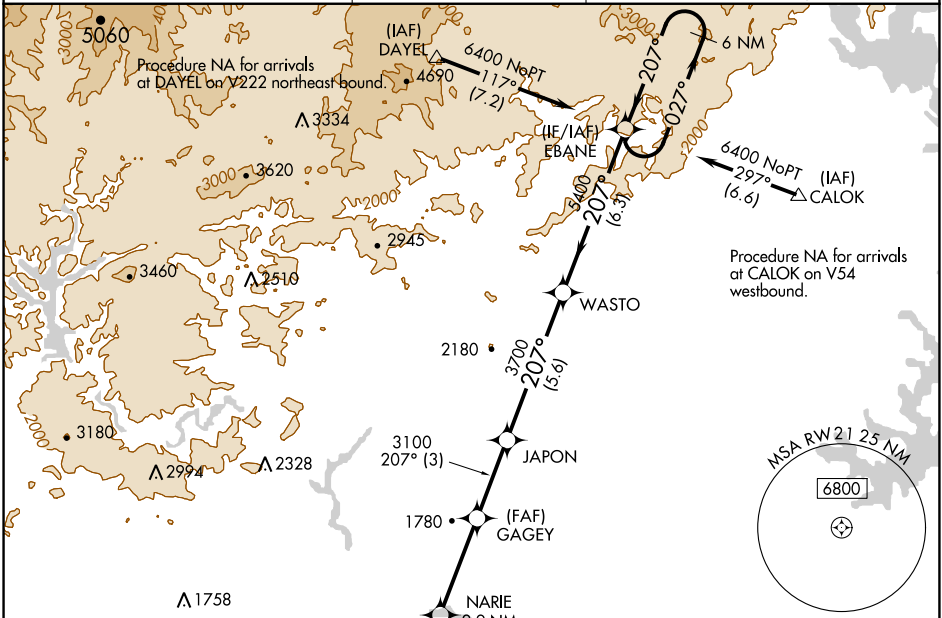
RNAV (GPS) RWY 21


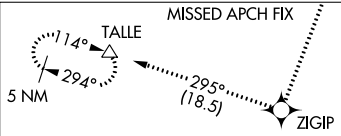



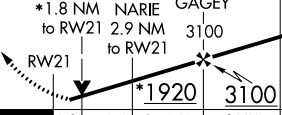
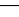
TOCCOA RG LETOURNEAU FIELD (TOC)

Baro-VNAV and VDP NA when using Gainesville altimeter setting. For uncompensated Baro-VNAV NA systems, LNAV/VNAV NA below -8°C (18°F) or above 54°C (130°F). DME/DME RNP-0.3 NA. When local altimeter setting not received use Gainesville altimeter setting and increase LPV DA to 1345 ft, LNAV/VNAV DA to 1510 ft, and all MDA 120 ft, increase LPV and LNAV all Cats visibility ¼ mile, LNAV/VNAV all Cats visibility ⅓ mile. Increase Circling Cats A/B/C visibility ¼ mile.

MISSED APPROACH: Climb to 5800 direct ZIGIP and on track 295° to TALLE and hold, continue climb-in-hold to 5800.

AWOS-3 119.625	ATLANTA CENTER 134.8 379.95	UNICOM 122.8 (CTAF) 0
--------------------------	---------------------------------------	---------------------------------



2029					
5800	ZIGIP	tr 295°	TALLE	* LNAV only	
					
*1.8 NM to RW21		GAGEY 3100		EBANE	
NARIE 2.9 NM to RW21		*1920		6 NM Holding Pattern	
		3100		GP 3.00° TCH 33	
1.8 1.1 NM		3.7 NM		3 NM	
		5.6 NM		6.3 NM	
CATEGORY	A	B	C	D	
LPV DA	1230-1		250 (300-1)		
LNAV/VNAV DA	1395-1½		415 (400-1½)		
LNAV MDA	1560-1	580 (600-1)	1560-1½	580 (600-1½)	
 CIRCLING	1720-1	724 (800-1)	1760-2¼ 764 (800-2¼)	2480-3 1484 (1500-3)	