

|  |                        |   |
|--|------------------------|---|
| WAAS<br>CH <b>40106</b><br><b>W06A</b> | APP CRS<br><b>056°</b> | Rwy Idg<br>TDZE <b>310</b><br>Apt Elev <b>310</b> |
|--|------------------------|---|

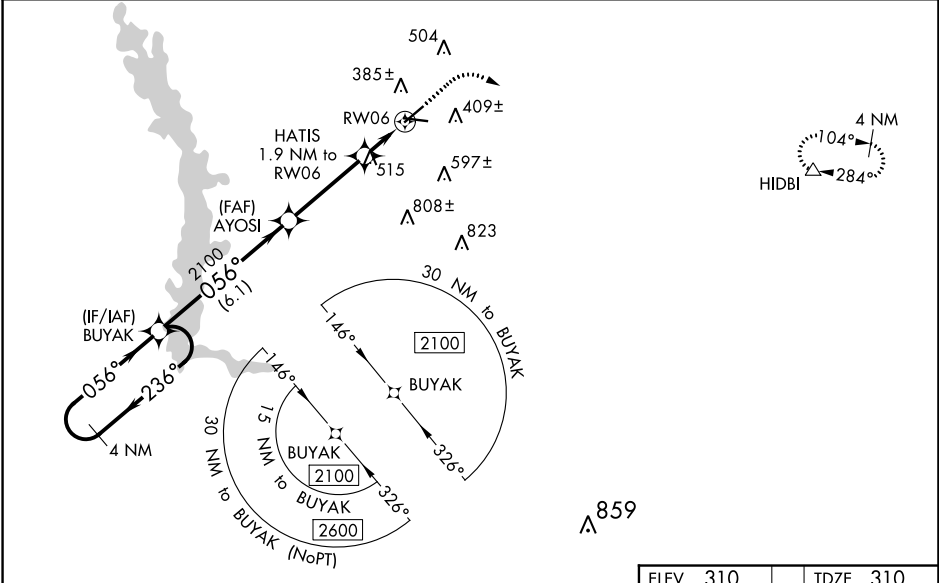
RNAV (GPS) RWY 6  
CRISP COUNTY-CORDELE (CKF)

RNP APCH.

For uncompensated Baro-VNAV systems, LNAV/VNAV NA below -15°C or above 54°C. Rwy 6 helicopter visibility reduction below ¾ SM NA. Straight-in Rwy 6 NA at night, Circling Rwy 6, 24, 28 NA at night.

MISSED APPROACH: Climb to 800 then climbing right turn to 2100 direct HIDBI and hold.

|                            |  |  |
|----------------------------|--|--|
| AWOS-3PT<br><b>119.325</b> | JACKSONVILLE CENTER<br><b>125.75 226.8</b> | UNICOM<br><b>123.050</b> (CTAF) <b>0</b> |
|----------------------------|--|--|



|                      |                      |                      |                         |                         |      |
|----------------------|----------------------|----------------------|-------------------------|-------------------------|------|
| 4 NM Holding Pattern |                      | BUYAK                | AYOSI                   | HATIS                   | RW06 |
| 2100 ← 236°          |                      | 056° →               | 2100                    | 1.9 NM to RW06          |      |
| GP 3.00°             |                      |                      |                         | *1.3 NM to RW06         |      |
| TCH 52               |                      |                      |                         | *960                    |      |
|                      |                      | 6.1 NM               | 3.6 NM                  | 0.6                     | 1.3  |
| CATEGORY             | A                    | B                    | C                       | D                       |      |
| LPV DA               | 573-1                |                      | 263 (300-1)             |                         |      |
| LNAV/VNAV DA         | 647-1                |                      | 337 (300-1)             |                         |      |
| LNAV MDA             | 780-1                | 470 (500-1)          | 780-1⅓                  | 470 (500-1⅓)            |      |
| CIRCLING             | 800-1<br>490 (500-1) | 820-1<br>510 (600-1) | 1080-2¼<br>770 (800-2¼) | 1160-2¾<br>850 (900-2¾) |      |

ELEV 310 TDZE 310

800 2100 HIDBI

\*LNAV only.

MIRL Rwy 10-28 0  
REIL Rwy 10 and 28 0

SE-4, 31 DEC 2020 to 28 JAN 2021

SE-4, 31 DEC 2020 to 28 JAN 2021