

LOC/DME I-HDR	APP CRS	Rwy Idg	4600
111.5	316°	TDZE	922
Chan 52		Apt Elev	934

ILS or LOC RWY 31

BARROW COUNTY (WDR)

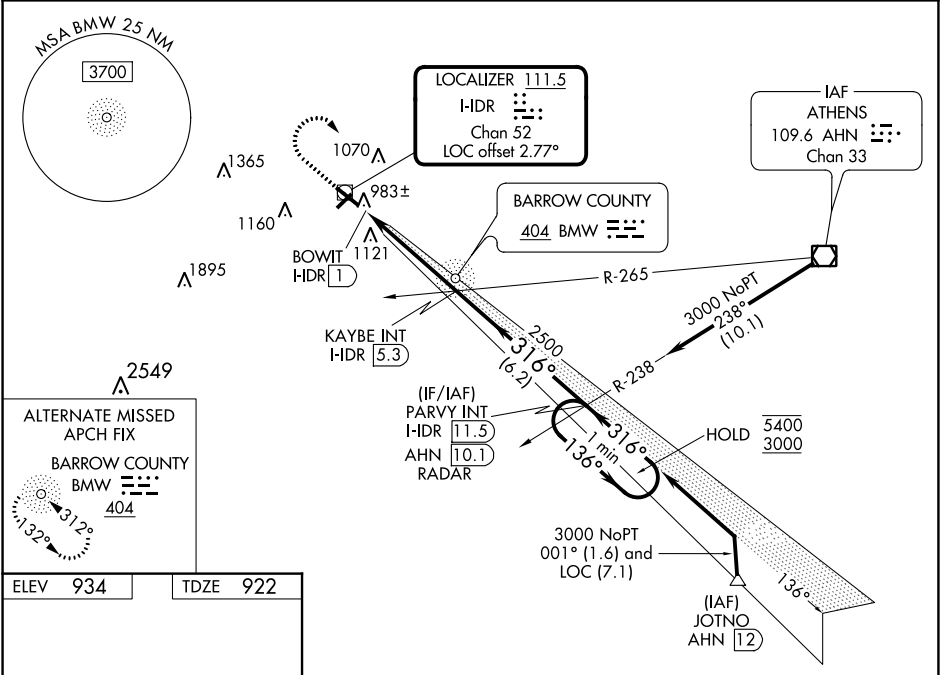
DME or RADAR required for procedure entry.

T Rwy 31 helicopter visibility reduction below $\frac{3}{4}$ SM NA. Inop table does not apply to S-ILS 31. For inop ALS, increase S-LOC 31 all Cats visibility to 1 SM. Circling Rwy 13, 23 NA at night.

MALSR

MISSED APPROACH: Climb to 1500 then climbing right turn to 3000 via heading 170° and I-HDR SE course to PARVY INT/I-HDR 11.5 DME/RADAR and hold.

AWOS-3 118.575	ATLANTA APP CON ★ 132.475 291.1	UNICOM 123.0 (CTAF) 0
-------------------	------------------------------------	--------------------------



ELEV 934 TDZE 922

REIL Rwy 31
HIRL Rwy 13-31 0
MIRL Rwy 5-23 0

FAF to MAP 4.3 NM

Knots	60	90	120	150	180
Min:Sec	4:18	2:52	2:09	1:43	1:26

1500 3000

I-HDR SE CRS

PARVY INT

VGSI and ILS glidepath not coincident (VGSI Angle 3.00/TCH 45).

One Minute Holding Pattern

PARVY INT I-HDR 11.5 RADAR

*LOC only.

*I-HDR 1.7

KAYBE INT I-HDR 5.3

BOWIT I-HDR 1

2500

2500

316°

136°

5400

3000

GS 3.00° TCH 43

CATEGORY	A	B	C	D
S-ILS 31	1172- $\frac{3}{4}$	250 (300- $\frac{3}{4}$)		
S-LOC 31	1300- $\frac{3}{4}$	378 (400- $\frac{3}{4}$)		
CIRCLING	1400-1 466 (500-1)	1500-1 566 (600-1)	1500-1½ 566 (600-1½)	1500-2 566 (600-2)

SE-4, 31 DEC 2020 to 28 JAN 2021

SE-4, 31 DEC 2020 to 28 JAN 2021