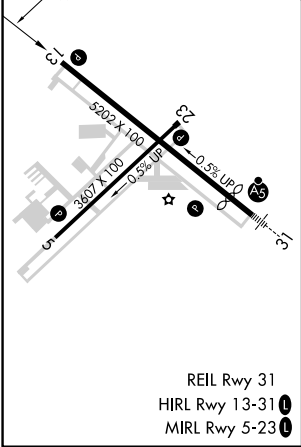
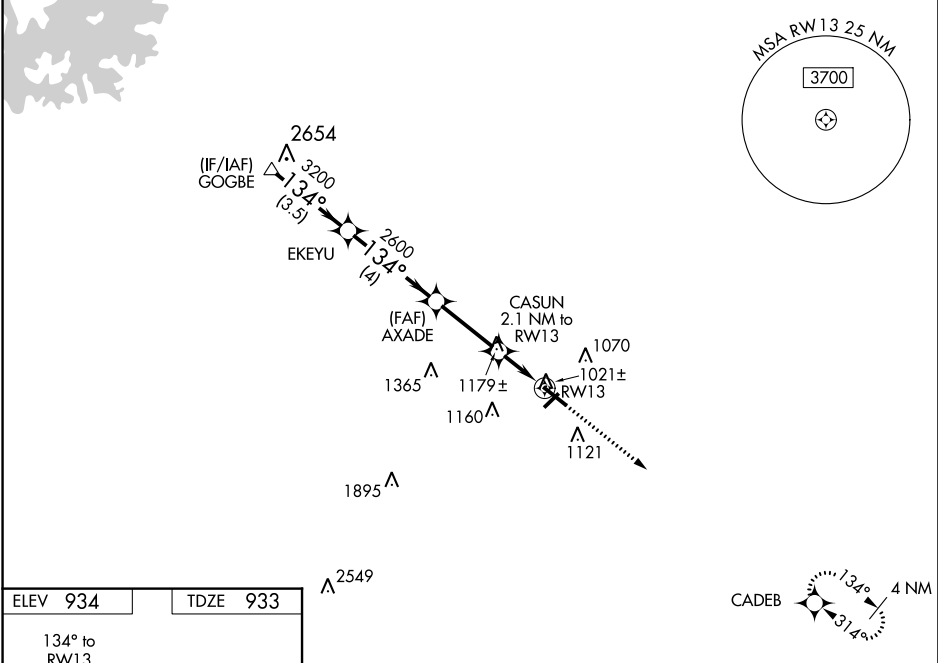


WAAS CH 90305 W13A	APP CRS 134°	Rwy Idg TDZE 933 Apt Elev 934	5202
--	------------------------	---	-------------

RNAV (GPS) RWY 13
BARROW COUNTY (WDR)

RNP APCH. <div>For uncompensated Baro-VNAV systems, LNAV/VNAV NA below -16°C or above 54°C. Straight-in Rwy 13 NA at night, Circling Rwy 13, 23 NA at night. Rwy 13 helicopter visibility reduction below 1 SM NA.</div>	MISSED APPROACH: Climb to 3000 direct CADEB and hold.
---	---

AWOS-3 118.575	ATLANTA APP CON ★ 132.475 291.1	UNICOM 123.0 (CTAF) 0
--------------------------	---	---------------------------------



VGSI and RNAV glidepath not coincident (VGSI Angle 3.00/TCH 30).				
3700 134° EKEYU 3200 AXADE 2600 CASUN 2.1 NM to RWY 13 1660 2600 3.5 NM 4 NM 2.9 NM 2.1 NM				
CATEGORY	A	B	C	D
LPV DA	1207-1 274 (300-1)			
LNAV/VNAV DA	1422-1 3/8 489 (500-1 3/8)			
LNAV MDA	1300-1 367 (400-1)			
CIRCLING	1400-1 466 (500-1)	1500-1 566 (600-1)	1500-1 1/2 566 (600-1 1/2)	1500-2 566 (600-2)