

WAAS CH 69305 W31A	APP CRS 314°	Rwy Idg TDZE 922 Apt Elev 934
--	------------------------	---

RNAV (GPS) RWY 31

BARROW COUNTY (WDR)

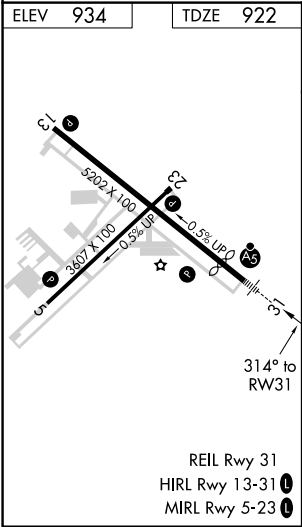
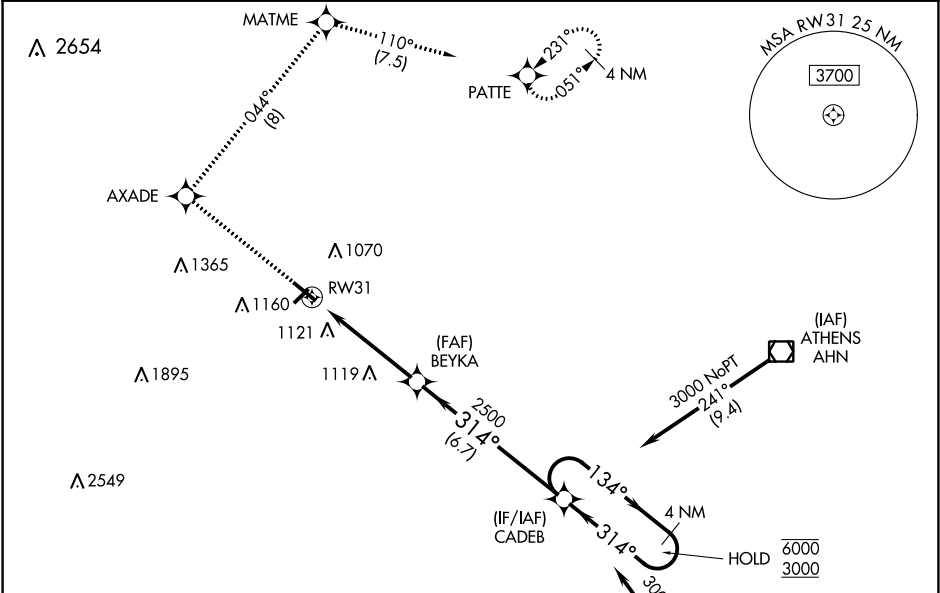
RNP APCH.

▼ For uncompensated Baro-VNAV systems, LNAV/VNAV NA below -16°C or above 54°C. Circling Rwy 13, 23 NA at night. Rwy 31 helicopter visibility reduction below ¾ SM NA. For inop ALS, increase LNAV/VNAV all Cats visibility to 1 SM, LNAV Cat A/B visibility to 1 SM, Cat C/D to 1 ½ SM. Inop table does not apply to LPV all Cats.

MALSR

MISSED APPROACH: Climb to 3000 direct AXADE and right turn on track 044° to MATME and on track 110° to PATTE and hold.

AWOS-3 118.575	ATLANTA APP CON ★ 132.475 291.1	UNICOM 123.0 (CTAF) 0
--------------------------	---	---------------------------------



3000	AXADE	MATME	PATTE	CADEB	4 NM Holding Pattern
↑	✧	tr 044°	✧	tr 110°	✧
VGSI and RNAV glidepath not coincident. (VGSI Angle 3.00/TCH 45). BEYKA					
* LNAV only.					
* 1.5 NM to RW31					
RW31					
1.5 NM 3.3 NM 6.7 NM					
134° 314° 134° 6000 3000					
GP 3.00° TCH 41					
CATEGORY	A	B	C	D	
LPV DA	1172-¾ 250 (300-¾)				
LNAV/VNAV DA	1274-¾ 352 (400-¾)				
LNAV MDA	1420-¾ 498 (500-¾)		1420-1 498 (500-1)		
CIRCLING	1420-1 486 (500-1)	1500-1 566 (600-1)	1500-1½ 566 (600-1½)	1500-2 566 (600-2)	

SE-4, 31 DEC 2020 to 28 JAN 2021

SE-4, 31 DEC 2020 to 28 JAN 2021