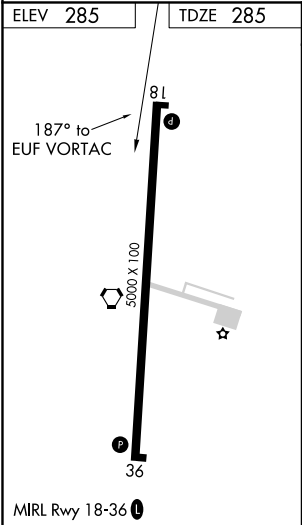
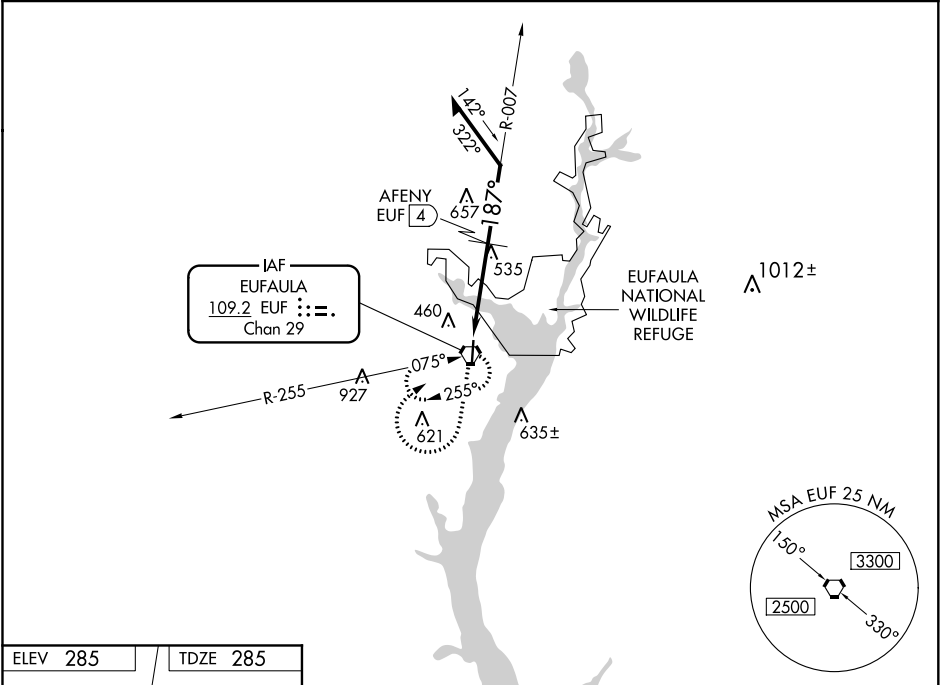


VORTAC	EUR	Rwy Idg	5000
109.2	APP CRS	TDZE	285
Chan 29	187°	Apt Elev	285

VOR RWY 18  
WEEDON FIELD (EUF)

<p>▼ NA</p> <p>Use Clayton altimeter setting; when not received, use Columbus, GA altimeter setting and increase all MDAs 40 feet and AFENY Fix Minimums Circling Cat C and D visibility ¼ mile.</p>	<p>MISSED APPROACH: Climb to 1500 then climbing right turn to 2000 direct EUF VORTAC and hold.</p>
--	--

ASOS 128.325	11A AWOS-3 118.775	ATLANTA APP CON ★ 125.5 323.1	CLNC DEL 134.25 339.8	UNICOM 122.8 (CTAF) 0
-----------------	-----------------------	----------------------------------	--------------------------	--------------------------



1500	2000	EUF	EUF VORTAC	Remain within 10 NM
↑	↪	⬡	AFENY EUF 4	2000
*1080 when using Columbus, GA altimeter setting.				
1040*				
4 NM				
CATEGORY	A	B	C	D
S-18	1040-1 755 (800-1)	1040-1¼ 755 (800-1¼)	1040-2¼ 755 (800-2¼)	1040-2½ 755 (800-2½)
CIRCLING	1040-1 755 (800-1)	1040-1¼ 755 (800-1¼)	1040-2¼ 755 (800-2¼)	1040-2½ 755 (800-2½)
AFENY FIX MINIMUMS (DME REQUIRED)				
S-18	900-1 615 (700-1)	900-1¾ 615 (700-1¾)	900-2 615 (700-2)	
CIRCLING	920-1 635 (700-1)	920-1¾ 635 (700-1¾)	1000-2½ 715 (800-2½)	