

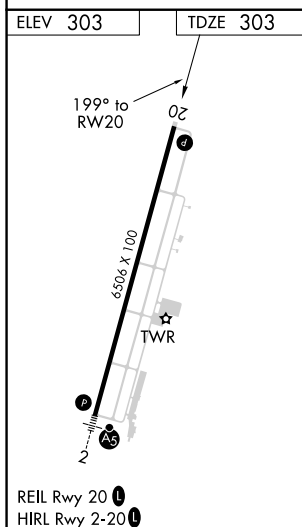
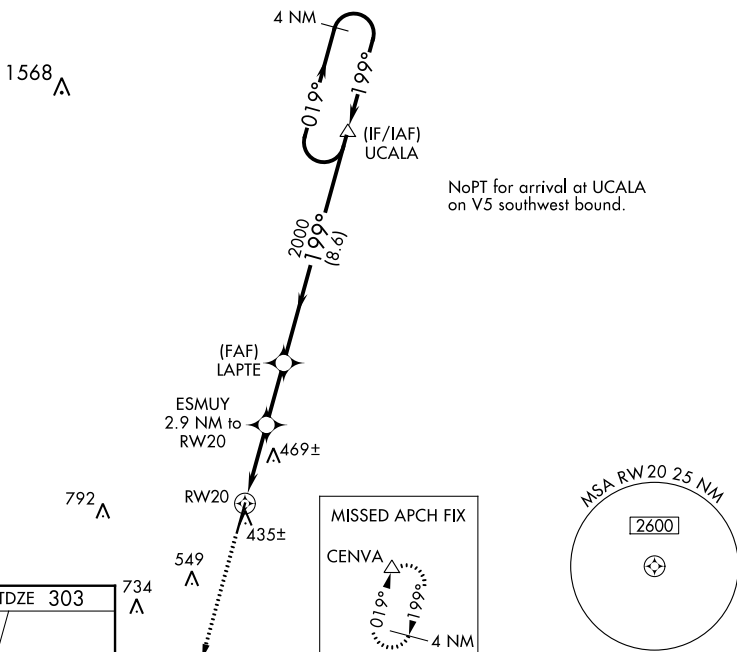
WAAS CH <b>56436</b> <b>W20A</b>	APP CRS <b>199°</b>	Rwy Idg <b>6506</b> TDZE <b>303</b> Apt Elev <b>303</b>
--	------------------------	---

RNAV (GPS) RWY 20  
HEART OF GEORGIA RGNL (EZM)

**⚠** Baro-VNAV NA when using Dublin altimeter setting. For uncompensated Baro-VNAV systems, LNAV/VNAV NA below -1.5°C (5°F) or above 54°C (130°F). When local altimeter setting not received, use Dublin altimeter setting and increase all DA 52 feet and all MDA 60 feet; increase LPV all Cats and LNAV Cat C/D visibility  $\frac{1}{8}$  mile and LNAV/VNAV all Cats and Circling Cat C visibility  $\frac{1}{4}$  mile. DME/DME RNP-0.3 NA. VDP NA with Dublin altimeter setting. Helicopter visibility reduction below  $\frac{3}{4}$  SM NA.

**MISSED APPROACH:**  
Climb to 2000 direct  
CENVA and hold.

ATIS <b>119.425</b>	JACKSONVILLE CENTER <b>127.575 269.025</b>	HEART OF GEORGIA TOWER ★ <b>124.55 (CTAF) 0</b>	GND CON <b>121.175</b>	UNICOM <b>122.95</b>
------------------------	---	--	---------------------------	-------------------------



2000 		CENVA 						
*LNAV only. 		ESMUY 2.9 NM to RW20	LAPTE 2000 *1.2 NM to RW20	UCALA 2000 199° 2100 019° → ← 199° GP 3.00° TCH 45°	4 NM Holding Pattern			
		1.2	1.7 NM	2.3 NM	8.6 NM			
CATEGORY		A	B	C	D			
LPV DA			602-1	299 (300-1)				
LNAV/VNAV DA			722-1⅜	417 (500-1⅜)				
LNAV MDA			720-1	417 (500-1)	720-1¼	417 (500-1¼)		
CIRCLING		760-1 457 (500-1)	820-1 517 (600-1)	900-1½ 597 (600-1½)	900-2 597 (600-2)			