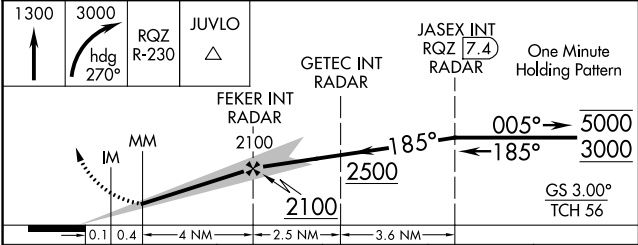
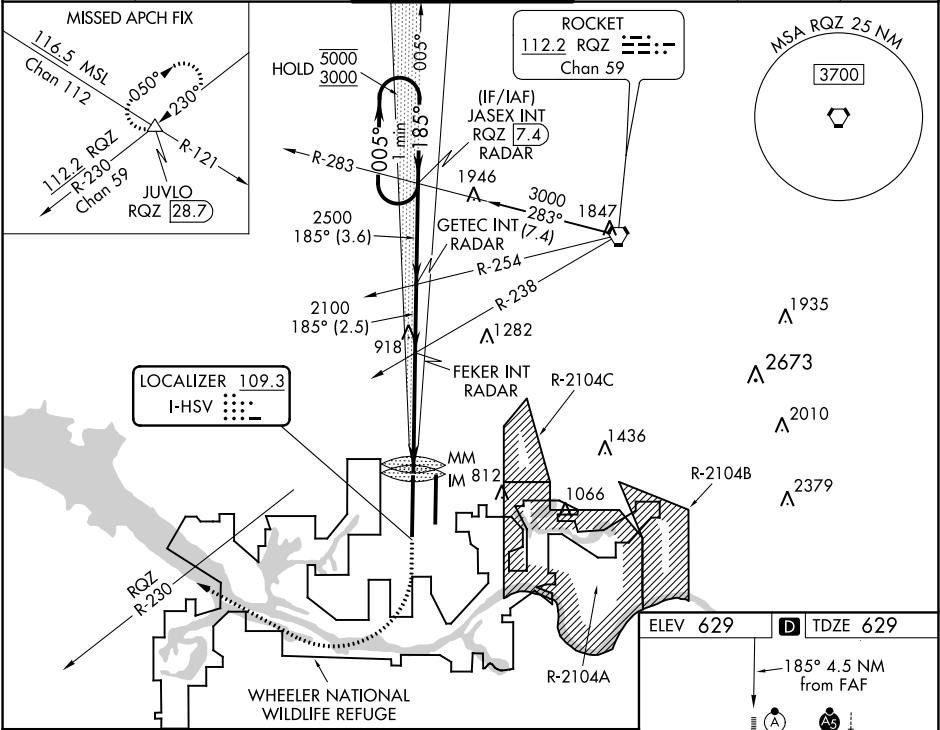


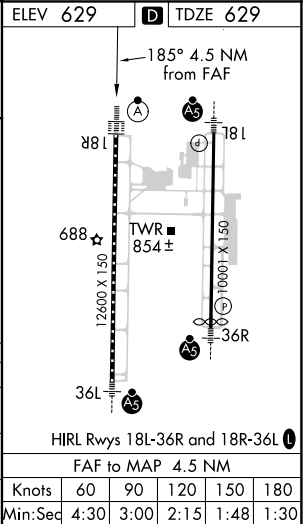
LOC I-HSV <b>109.3</b>	APP CRS <b>185°</b>	Rwy ldg <b>12600</b> TDZE <b>629</b> Apt Elev <b>629</b>
---------------------------	------------------------	--

ILS or LOC RWY 18R  
HUNTSVILLE INTL-CARL T JONES FIELD (HSV)

<div><div><div>T</div><div>A</div><div>ASR</div></div><div>Circling NA for Cat C/D/E east of Rwy 18L-36R. For inop ALS, increase S-ILS 18R Cat E visibility to RVR 4000 and S-LOC 18R Cat E visibility to 1% SM. Simultaneous approach authorized.</div></div>			<div>ALSF-2</div> <div><div><div><div></div></div><div><div></div></div></div></div>	<div>MISSED APPROACH: Climb to 1300 then climbing right turn to 3000 on heading 270° and RQZ R-230 to JUVLO INT/RQZ 28.7 DME and hold.</div>	
<div>ATIS</div> <div>121.25</div>	<div>HUNTSVILLE APP CON ★</div> <div>125.6 354.1</div>	<div>HUNTSVILLE TOWER ★</div> <div>127.6 (CTAF) 0 350.35</div>	<div>GND CON</div> <div>121.9 269.525</div>	<div>CLNC DEL</div> <div>120.35</div>	<div>UNICOM</div> <div>122.95</div>



CATEGORY	A	B	C	D	E
S-ILS 18R	829/18 200 (200-1/2)				
S-LOC 18R	1180/24 551 (600-1/2)	1180/60 551 (600-1 1/4)			
CIRCLING	1180-1 551 (600-1)	1180-1 1/4 551 (600-1 1/4)	1240-2 611 (700-2)	1260-2 1/4 631 (700-2 1/4)	



SE-4, 31 DEC 2020 to 28 JAN 2021

SE-4, 31 DEC 2020 to 28 JAN 2021