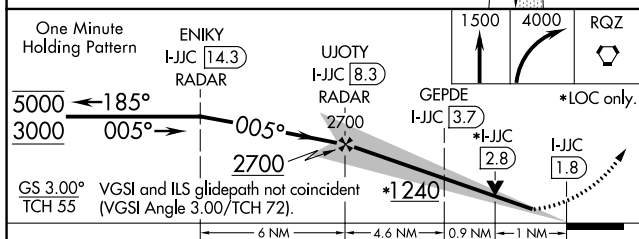
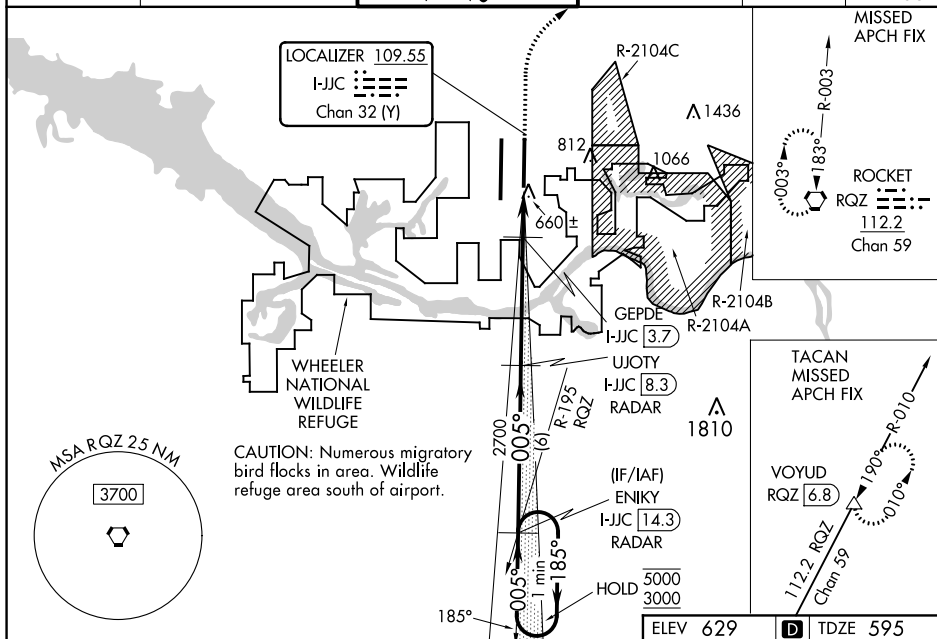




ILS or LOC RWY 36R
HUNTSVILLE INTL-CARL T JONES FIELD (HSV)

MISSED APPROACH: Climb to 1500 then climbing right turn to 4000 direct RQZ VORTAC and hold. (TACAN aircraft climb to 5000 on RQZ VORTAC R-010 to VOYUD/RQZ 6.8 DME and hold north, left turn, 190° inbound).



ATIS 121.25	HUNTSVILLE APP CON ★ 125.6 354.1	HUNTSVILLE TOWER ★ 127.6 (CTAF) 0 350.35	GND CON 121.9 269.525	CLNC DEL 120.35	UNICOM 122.95
----------------	-------------------------------------	---	--------------------------	--------------------	------------------



CATEGORY	A	B	C	D	E
S-ILS 36R	818/24 223 (200-½)				
S-LOC 36R	1240/24 645 (700-½)	1240-1⅓ 645 (700-1⅓)			
 CIRCLING	1240-1 611 (700-1)	1240-1⅞ 611 (700-1⅞)	1240-2 611 (700-2)	1260-2¼ 631 (700-2¼)	
GEPDE FIX MINIMUMS					
S-LOC 36R	980/24 385 (400-½)	980/35 385 (400-⅝)			
 CIRCLING	1160-1 531 (600-1)	1160-1½ 531 (600-1½)	1240-2 611 (700-2)	1260-2¼ 631 (700-2¼)	

