

WAAS CH 58206 W18B	APP CRS 185°	Rwy Idg 12600 TDZE 629 Apt Elev 629
--	------------------------	--

RNAV (GPS) RWY 18R

HUNTSVILLE INTL-CARL T JONES FIELD (HSV)

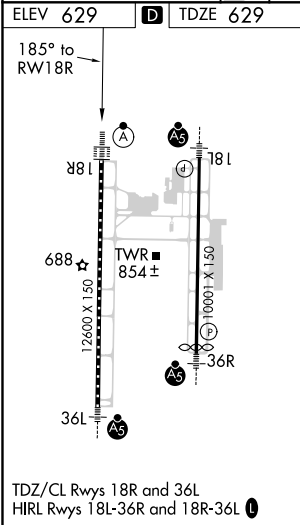
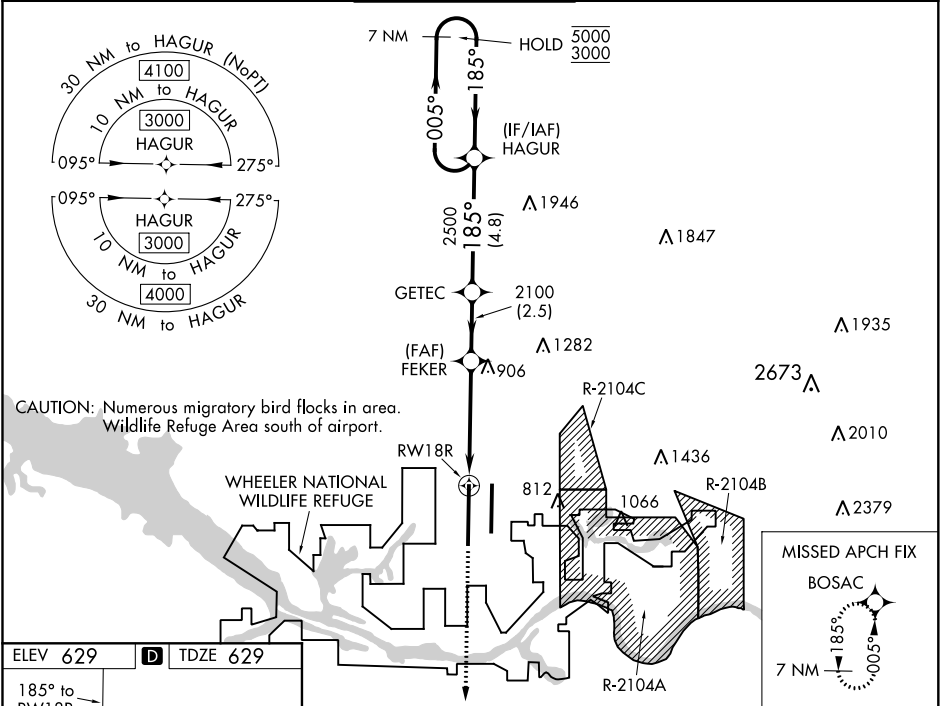
RNP APCH.





▼ For uncompensated Baro-VNAV systems, LNAV/VNAV NA below -10 °C or above 54°C.
▲ Circling NA for Cats C/D/E east of Rwy 18L-36R. For inop ALS, increase LPV Cat E visibility ASR to RVR 4000, LNAV/VNAV Cat E visibility to 1½ SM, and LNAV Cat C/D/E visibility to 1½ SM.

ALSF-2

MISSED APPROACH:
Climb to 3000 direct BOSAC and hold.

ATIS 121.25	HUNTSVILLE APP CON ★ 125.6 354.1	HUNTSVILLE TOWER ★ 127.6 (CTAF) 350.35	GND CON 121.9 269.525	CLNC DEL 120.35	UNICOM 122.95
-----------------------	--	--	---------------------------------	---------------------------	-------------------------



3000	BOSAC	7 NM Holding Pattern			
					
*LNAV only.		FEKER	GETEC	HAGUR	
*1.6 NM to RW18R		2100	2500	185°	005° → 5000 ← 185° 3000
	1.6 NM	2.9 NM	2.5 NM	4.8 NM	GP 3.00° TCH 56°
CATEGORY	A	B	C	D	E
LPV DA	829/18 200 (200-½)				
LNAV/ VNAV DA	1071/45 442 (500-¾)				
LNAV MDA	1200/24	571 (600-½)	1200-1¼	571 (600-1¼)	
 CIRCLING	1200-1	571 (600-1)	1200-1½ 571 (600-1½)	1240-2 611 (700-2)	1260-2¼ 631 (700-2¼)