

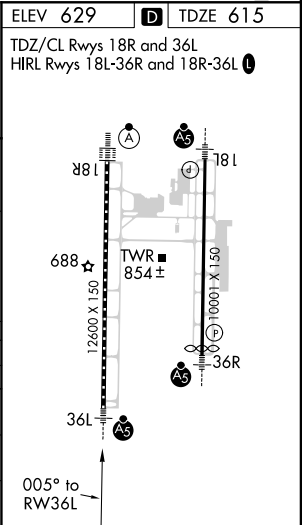
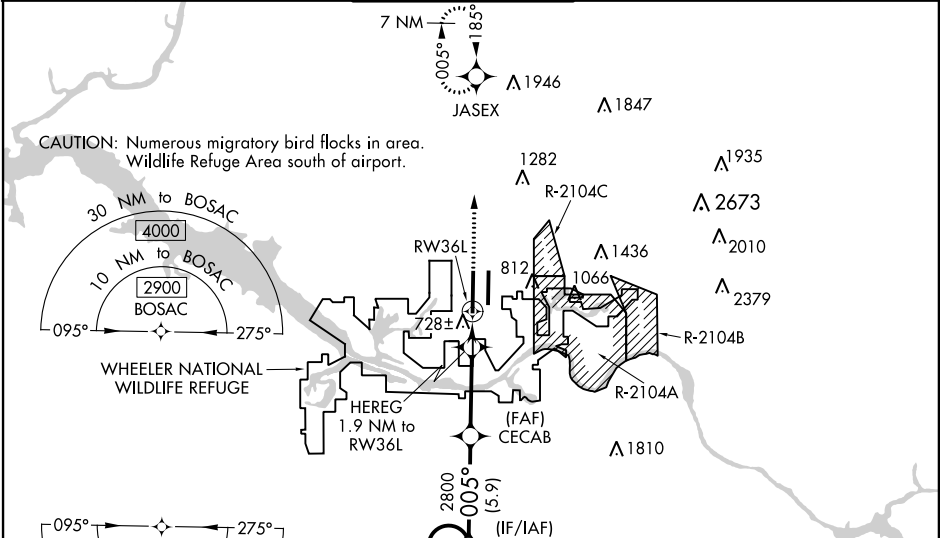


WAAS CH 82606 W36A	APP CRS 005°	Rwy Idg 12600 TDZE 615 Apt Elev 629
--	------------------------	--

RNAV (GPS) RWY 36L
HUNTSVILLE INTL-CARL T JONES FIELD (HSV)

RNP APCH.		<div>MALSR</div> <div></div>	MISSED APPROACH: Climb to 3000 direct JASEX and hold.
<div></div> <div>ASR</div>	<div>For uncompensated Baro-VNAV systems, LNAV/VNAV NA below -10°C or above 54°C. For inop ALS, increase LPV Cat E visibility to RVR 4000, LNAV/VNAV all Cats visibility to RVR 4500, and LNAV Cats C/D/E visibility to RVR 5500. Circling NA for Cats C/D/E east of Rwy 18L-36R. Simultaneous approach authorized. LNAV procedure NA during simultaneous operations. Use of FD or AP required during simultaneous operations.</div>		

ATIS 121.25	HUNTSVILLE APP CON ★ 125.6 354.1	HUNTSVILLE TOWER ★ 127.6 (CTAF) 0 350.35	GND CON 121.9 269.525	CLNC DEL 120.35	UNICOM 122.95
-----------------------	--	--	---------------------------------	---------------------------	-------------------------



7 NM Holding Pattern		BOSAC	CECAB	HEREG	JASEX
5000 2800 185° 005°		2800	2800	1.9 NM to RW36L	3000
GP 3.00° TCH 53				*1280	
		5.9 NM	4.8 NM	0.9 NM	1 NM
CATEGORY	A	B	C	D	E
LPV DA	815/18		200 (200-½)		
LNAV/VNAV DA	909/24		294 (300-½)		
LNAV MDA	980/24	365 (400-½)	980/35	365 (400-¾)	
CIRCLING	1160-1	531 (600-1)	1160-1½ 531 (600-1½)	1240-2 611 (700-2)	1260-2¼ 631 (700-2¼)