

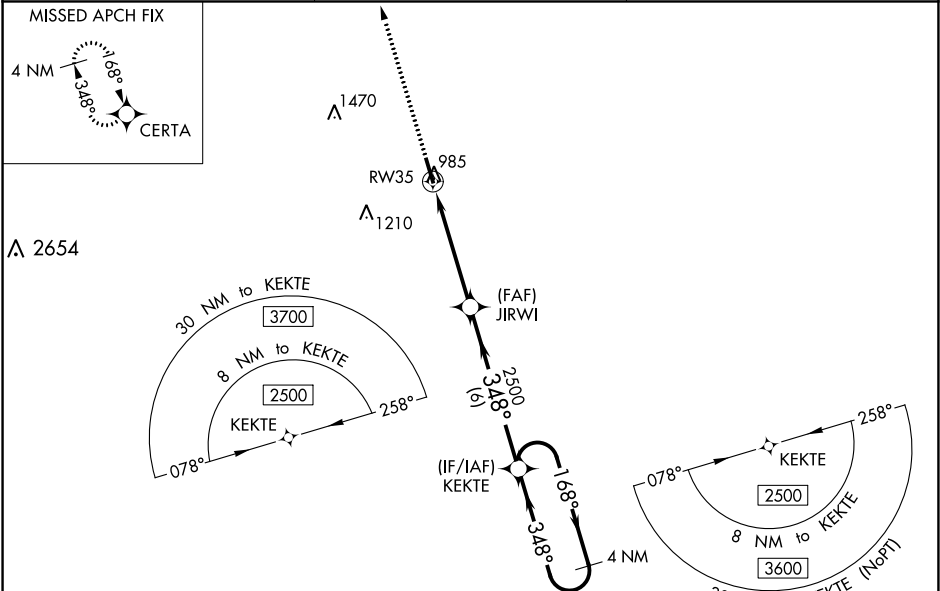
WAAS CH 82704 W35A	APP CRS 348°	Rwy Idg 5010 TDZE 951 Apt Elev 951
--	------------------------	---

RNAV (GPS) RWY 35
JACKSON COUNTY (JCA)

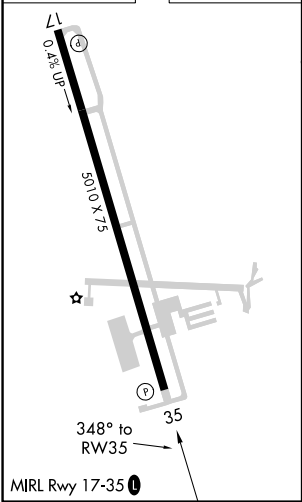
⚠ For uncompensated Baro-VNAV systems, LNAV/VNAV NA below -16°C (4°F) or above 54°C (130°F). Circling NA for Cat D west of Rwy 17-35. Baro-VNAV and VDP NA when using Winder altimeter setting. DME/DME RNP-0.3 NA. Helicopter visibility reduction below ¾ SM NA. When local altimeter setting not received, use Winder altimeter setting: increase LPV DA to 1232 feet and LNAV/VNAV DA to 1241 feet and all MDA 40 feet; increase LPV visibility all Cats, LNAV/VNAV visibility all Cats, and LNAV Cat C/D visibility ¼ mile; increase Circling Cat C visibility ¼ mile.



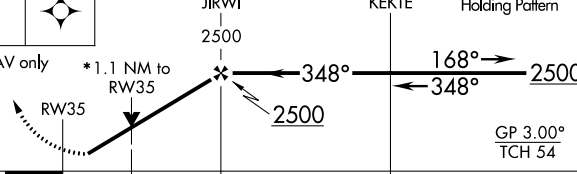
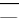
MISSED APPROACH:
Climb to 3700 direct CERTA and hold.

AWOS-3PT 118.125	ATLANTA APP CON * 132.475 291.1	UNICOM 122.8 (CTAF) 1
----------------------------	---	---------------------------------



ELEV 951	TDZE 951
-----------------	-----------------



3700	CERTA				
					
* LNAV only					
		GP 3.00° TCH 54			
CATEGORY		A	B	C	D
LPV DA	1201- ³ / ₄ 250 (300- ³ / ₄)				
LNAV/ VNAV	DA	1210- ³ / ₄ 259 (300- ³ / ₄)			
LNAV MDA		1340-1 389 (400-1)	1340-1 ¹ / ₈ 389 (400-1 ¹ / ₈)		
 CIRCLING		1440-1 489 (500-1)	1520-1 ¹ / ₂ 569 (600-1 ¹ / ₂)	1520-2 569 (600-2)	