

WAAS  
CH **77605**  
**W23A**

APP CRS  
**224°**

Rwy Idg  
TDZE **1274**  
Apt Elev **1277**

**RNAV (GPS) RWY 23**

LEE GILMER MEMORIAL (GVL)

RNP APCH.

LNAV/VNAV NA when using Jefferson altimeter setting. Rwy 23 helicopter visibility reduction below ¼ SM NA. For uncompensated Baro-VNAV systems, LNAV/VNAV NA below -17°C or above 46°C. When local altimeter setting not received, use Jefferson altimeter setting: increase all DA/MDA 80 feet; increase LPV all Cats visibility ¼ SM, and increase LNAV Cats C/D visibility and Circling Cats C/D visibility ¼ SM. Circling Rwy 11, 29 NA at night.

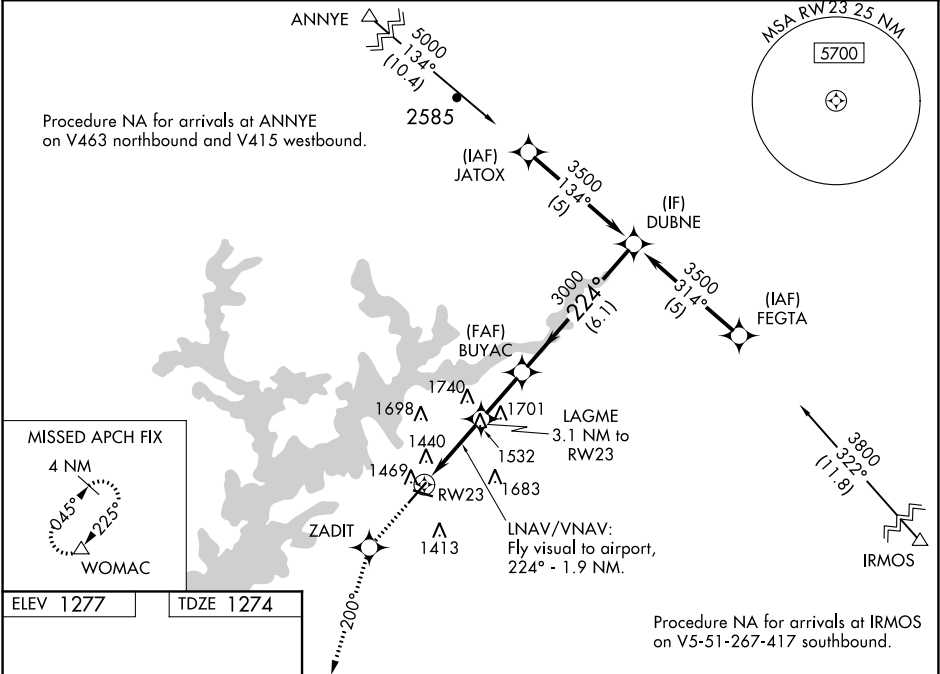
MISSED APPROACH: Climb to 4000 direct ZADIT and on 200° track to WOMAC and hold, continue climb-in-hold to 4000.

ASOS  
**126.475**

ATLANTA APP CON★  
**132.475 291.1**

GCO  
**121.725**

UNICOM  
**123.075 (CTAF) 0**



4000 ZADIT tr 200° WOMAC

\*LNAV only. LNAV/VNAV: Fly visual to airport, 224° - 1.9 NM. RWY 23

LAGME 3.1 NM to RWY 23

BUYAC 2220\* 3000 3500 Procedure Turn NA GP 3.00° TCH 40

3.1 NM 2.2 NM 6.1 NM

CATEGORY	A	B	C	D
LPV DA	1722-1¾ 448 (500-1¾)			
LNAV/VNAV DA	1884-2 610 (700-2)			
LNAV MDA	1840-1 566 (600-1)	1840-1½ 566 (600-1½)	1840-1¾ 566 (600-1¾)	1840-2 566 (600-2)
CIRCLING	1880-1 603 (700-1)	1880-1¾ 603 (700-1¾)	2060-2½ 783 (800-2½)	

HIRL Rwy 5-23 1

0.3% UP 4003 X 100 54% X 100