

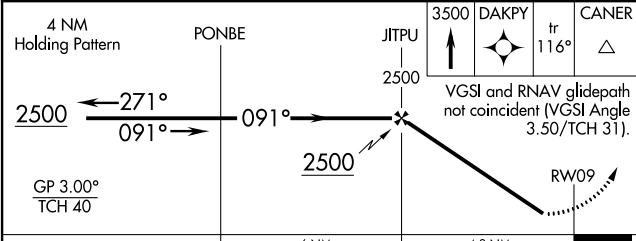
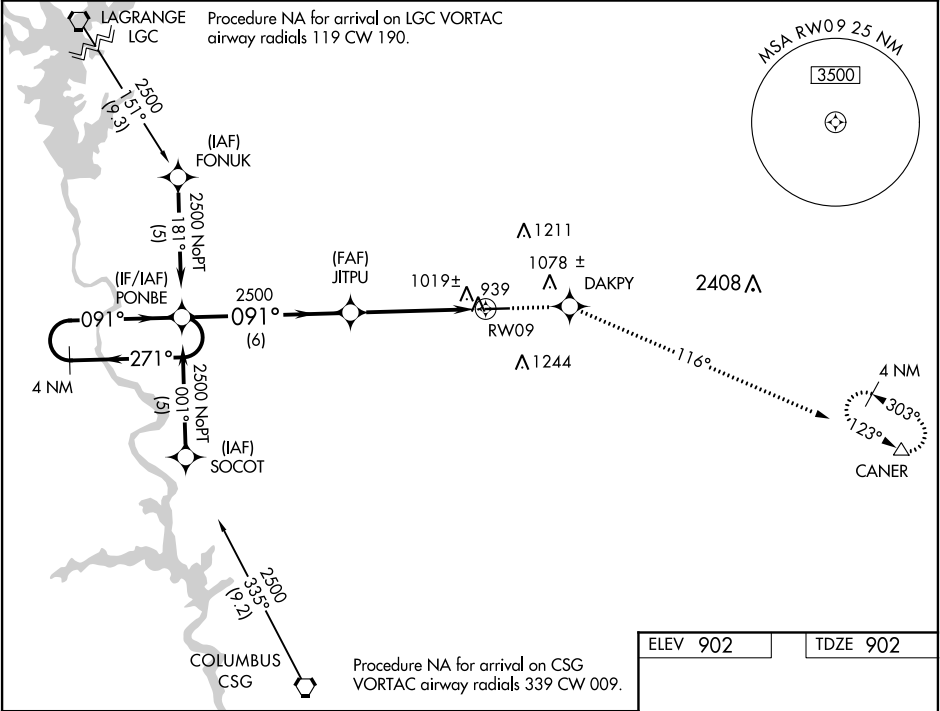
WAAS CH 58019 W09A	APP CRS 091°	Rwy Idg 5002 TDZE 902 Apt Elev 902
--	------------------------	---

RNAV (GPS) RWY 9

HARRIS COUNTY (PIM)

RNP APCH.	When local altimeter setting not received, use LaGrange altimeter setting. Baro-VNAV NA when using LaGrange altimeter setting. Rwy 9 helicopter visibility reduction below ¾ SM NA. Circling Rwy 27 NA at night.	MISSED APPROACH: Climb to 3500 direct DAKPY and on track 116° to CANER and hold.
-----------	--	--

AWOS-3PT 120.275	LGC AWOS-3 126.325	ATLANTA APP CON* 124.2 323.1	CLNC DEL 127.7	GCO 121.725	UNICOM 122.8 (CTAF) 0
----------------------------	------------------------------	--	--------------------------	-----------------------	---------------------------------



CATEGORY	A	B	C	D
LPV DA		1217-1	315 (400-1)	
LNAV/VNAV DA		1383-1¾	481 (500-1¾)	
LNAV MDA	1400-1 498 (500-1)	1400-1¼ 498 (500-1¼)	1400-1½ 498 (500-1½)	
CIRCLING	1440-1 538 (600-1)	1460-1½ 558 (600-1½)	1660-2½ 758 (800-2½)	

ELEV 902 TDZE 902

MIRL Rwy 9-27 0