

LOC I-VDI	APP CRS	Rwy Idg	6002
110.3	249°	TDZE	273
		Apt Elev	274

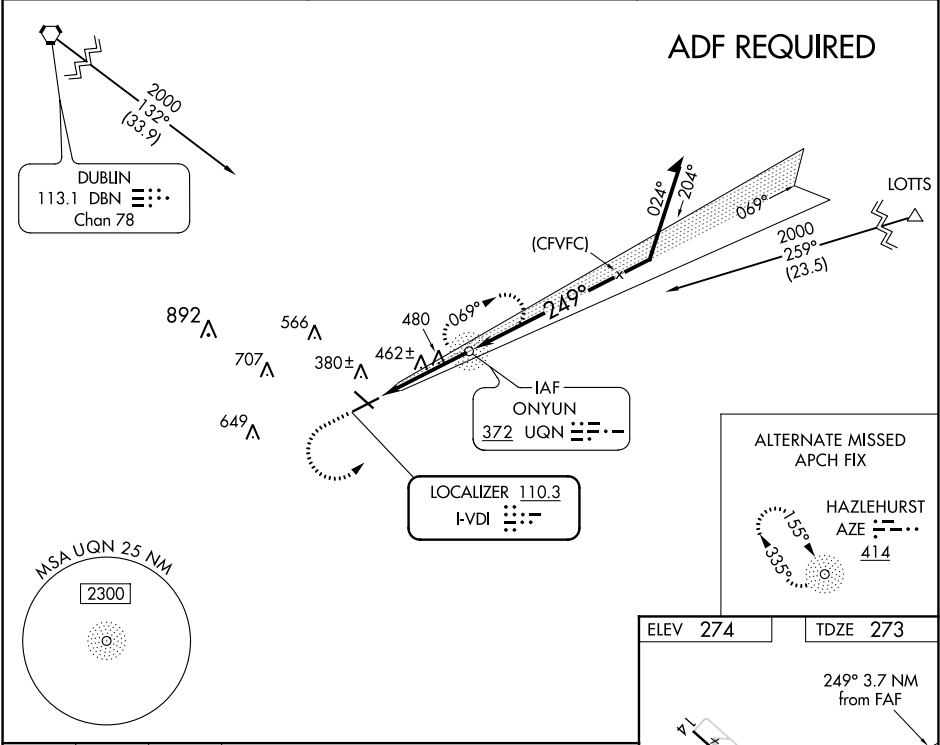
ILS or LOC RWY 25  
VIDALIA RGNL (VDI)

**⚠** When local altimeter setting not received, use Baxley altimeter setting and increase all DAs 77 feet and all MDAs 80 feet, increase S-LOC 25 Cat C/D visibility 1/4 mile, Circling Cat C/D visibility 1/4 mile. For inop MALSR, increase S-LOC 25 Cat C/D visibility to 1 1/2 mile. For inop MALSR, when using Baxley altimeter setting increase S-ILS 25 all Cats visibility to 1/2 mile. Night landing Rwy 32 NA. ADF required.

**MALSR**

**MISSED APPROACH:** Climb to 1100 then climbing left turn to 2000 direct UQN NDB and hold.

AWOS-3 119.925	JACKSONVILLE CENTER 127.575 269.025	UNICOM 122.8 (CTAF) <b>0</b>
-------------------	--	---------------------------------



1100	2000	UQN	UQN NDB	Remain within 10 NM
VGSI and ILS glidepath not coincident (VGSI Angle 3.00/TCH 48).				
CATEGORY	A	B	C	D
S-ILS 25	473-1/2 200 (200-1/2)			
S-LOC 25	740-1/2	467 (500-1/2)	740-1	467 (500-1)
<b>C</b> CIRCLING	740-1	466 (500-1)	920-1 3/4 646 (700-1 3/4)	1060-2 1/2 786 (800-2 1/2)

ELEV 274	TDZE 273
HIRL Rwy 7-25 <b>0</b>	
REIL Rwy 7 and 25	
FAF to MAP 3.7 NM	
Knots	60 90 120 150 180
Min:Sec	3:42 2:28 1:51 1:29 1:14

SE-4, 31 DEC 2020 to 28 JAN 2021

SE-4, 31 DEC 2020 to 28 JAN 2021