

WAAS CH <b>69609</b> <b>W25A</b>	APP CRS <b>249°</b>	Rwy Idg TDZE <b>273</b> Apt Elev <b>274</b>	<b>6002</b>
--	------------------------	---	-------------

RNAV (GPS) RWY 25  
VIDALIA RGNL (VDI)

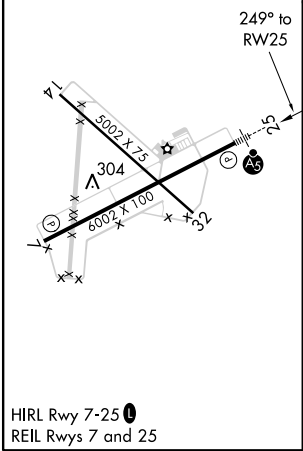
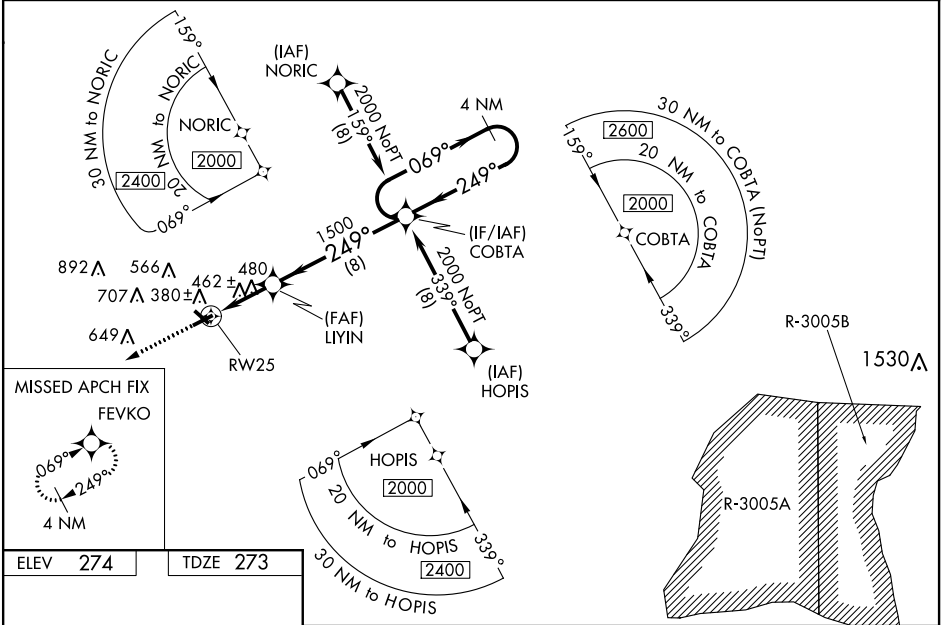
**▼** DME/DME RNP-0.3 NA. Night Landing Rwy 32 NA. VDP and Baro-VNAV NA when using Baxley altimeter setting. When local altimeter setting not received, use Baxley altimeter setting and increase all DA 77 feet and all MDA 80 feet; increase LNAV/VNAV all Cats visibility ¼ mile, LNAV Cats C/D visibility ½ mile, and Circling Cats C/D visibility ¾ mile. For inop MALSR, increase LNAV/VNAV all Cats visibility to 1 mile and LNAV Cats C/D visibility to 1 ½ mile. For inop MALSR when using Baxley altimeter setting, increase LPV all Cats visibility to ¾ mile, LNAV/VNAV all Cats visibility to 1 ¼ mile. For uncompensated Baro-VNAV systems, LNAV/VNAV NA below -15°C (5°F) or above 54°C (130°F)

MALSR



MISSED APPROACH:  
Climb to 2000 direct  
FEVKO and hold.

AWOS-3 <b>119.925</b>	JACKSONVILLE CENTER <b>127.575 269.025</b>	UNICOM <b>122.8 (CTAF)</b>
--------------------------	---	-------------------------------



ELEV 274 TDZE 273		2000 FEVKO		VGSI and RNAV descent angles not coincident (VGSI Angle 3.00/TCH 48).	
*LNAV only.		LIYIN 1500		COBTA 4 NM Holding Pattern	
*1.3 NM to RW25		249° 2000		GP 3.00° TCH 44	
RW25		1500			
1.3		2.4 NM		8 NM	
CATEGORY	A	B	C	D	
LPV DA	473-½		200 (200-½)		
LNAV/VNAV DA	580-⅝		307 (400-⅝)		
LNAV MDA	740-½ 467 (500-½)		740-1 467 (500-1)		
CIRCLING	740-1 466 (500-1)		920-1¾ 1060-2½ 646 (700-1¾) 786 (800-2½)		

SE-4, 31 DEC 2020 to 28 JAN 2021

SE-4, 31 DEC 2020 to 28 JAN 2021