

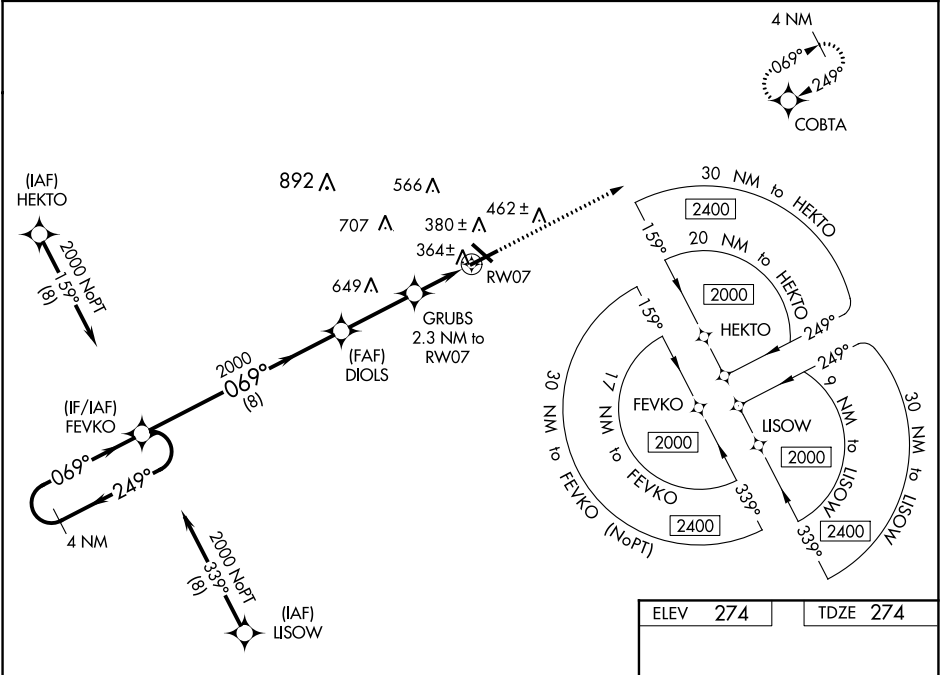
WAAS CH <b>66037</b> <b>W07A</b>	APP CRS <b>069°</b>	Rwy Idg TDZE Apt Elev	<b>6002</b> <b>274</b> <b>274</b>
--	------------------------	-----------------------------	---

RNAV (GPS) RWY 7  
VIDALIA RGNL (VDI)

**⚠** For uncompensated Baro-VNAV systems, LNAV/VNAV NA below -15°C (5°F) or above 54°C (130°F). DME/DME RNP-0.3 NA. When local altimeter setting not received, use Baxley altimeter setting and increase all DA 77 feet and all MDA 80 feet, increase LPV and LNAV/VNAV all Cnts visibility ¼ mile, LNAV and Circling Cnts C/D visibility ¼ mile. VDP and Baro-VNAV NA when using Baxley altimeter setting. Night Landing: Rwy 32 NA. Helicopter visibility reduction below ¾ SM NA.

**MISSED APPROACH:**  
Climb to 2000 direct COBTA and hold.

AWOS-3 <b>119.925</b>	JACKSONVILLE CENTER <b>127.575 269.025</b>	UNICOM <b>122.8 (CTAF)</b>
--------------------------	---	-------------------------------



VGSI and RNAV descent angles not coincident (VGSI Angle 3.00/TCH 41).

4 NM Holding Pattern

FEVKO

DIOLS

GRUBS 2.3 NM to RW07

2000

1060

RW07

GP 3.00° TCH 60

8 NM

2.9 NM

1.3 NM

1 NM

2000

COBTA

\*LNAV only.

\*1 NM to RW07

CATEGORY	A	B	C	D
LPV DA		524-¾	250 (300-¾)	
LNAV/VNAV DA		527-¾	253 (300-¾)	
LNAV MDA		620-1	346 (400-1)	
CIRCLING	740-1	466 (500-1)	920-1¾ 646 (700-1¾)	1060-2½ 786 (800-2½)

ELEV 274

TDZE 274

069° to RW07

HIRL Rwy 7-25

REIL Rwy 7 and 25

SE-4, 31 DEC 2020 to 28 JAN 2021

SE-4, 31 DEC 2020 to 28 JAN 2021