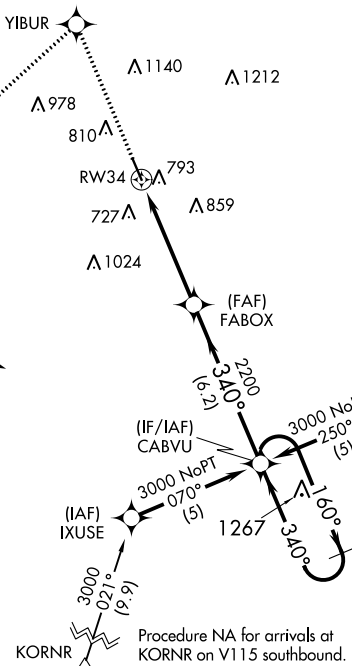


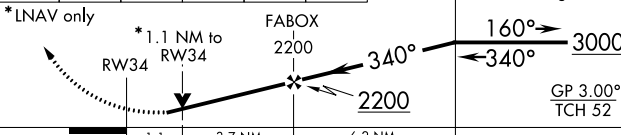
RNAV (GPS) RWY 34

SHELBY COUNTY (EET)

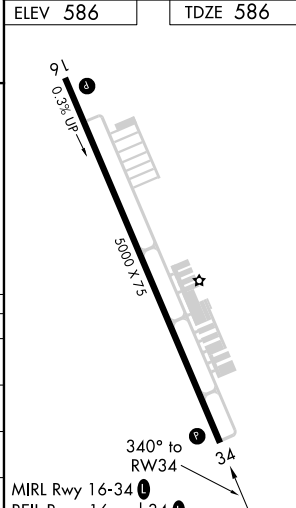
MISSED APPROACH: Climb to 3000 direct YIBUR and left turn on track 231° to AKGOS and left turn on track 113° to CABVU and hold.

UNICOM
122.7 (CTAF) **L**

VGSI and RNAV glidepath not coincident (VGSI Angle 4.00/TCH 44). 4 NM
CARVU Holding Pattern



CATEGORY	A	B	C	D
LPV DA	947-1¼ 361 (400-1¼)			
LNAV/ VNAV DA	1093-1¾ 507 (600-1¾)			
LNAV MDA	1100-1 514 (600-1)	1100-1½ 514 (600-1½)	1100-1¾ 514 (600-1¾)	
CIRCLING	1120-1 534 (600-1)	1120-1½ 534 (600-1½)	1220-2 634 (700-2)	



SE-4, 31 DEC 2020 to 28 JAN 2021