

WAAS CH 50137 W25A	APP CRS 254°	Rwy Idg TDZE Apt Elev	6197 394 397
--	------------------------	-----------------------------	---

RNAV (GPS) RWY 25

TROY MUNI AT N KENNETH CAMPBELL FIELD (TOI)

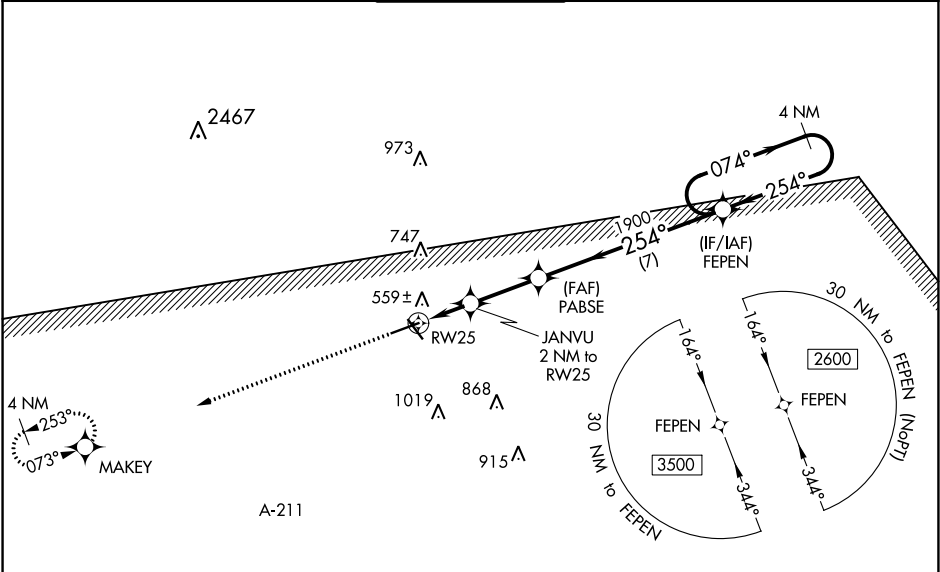
RNP APCH.

ASR/PAR

For uncompensated Baro-VNAV systems, LNAV/VNAV NA below -7°C (20°F) or above 54°C (130°F). Baro-VNAV and VDP NA when using Montgomery Rgnl (Dannelly Field) altimeter setting. Rwy 25 helicopter visibility reduction below ¾ SM NA. Circling to Rwy 14, 32 NA at night. When local altimeter setting not received, use Montgomery Rgnl (Dannelly Field) altimeter setting and increase LPV DA to 747 and all visibilities ¼ SM, LNAV/VNAV DA to 840 and visibilities ⅓ SM, and all MDA 100 feet; increase LNAV Cals C and D and Circling Cat C visibility ¼ SM.

MISSED APPROACH:
Climb to 2200 direct
MAKEY and hold.

ATIS 120.925	CAIRNS APP CON ★ 121.1 319.25	TROY TOWER ★ 124.3 (CTAF) 0 306.9	GND CON 121.9 294.7	UNICOM 122.8
------------------------	---	---	-------------------------------	------------------------



2200 MAKEY

*LNAV only.

JANVU 2 NM to RW25

PABSE 1900

FEPEN 4 NM Holding Pattern

074° 254° 2600

*1.2 NM to RW25

*1060

1900

GP 3.00° TCH 45

1.2 NM 0.8 NM 2.6 NM 7 NM

CATEGORY	A	B	C	D
LPV DA		647-7/8	253 (300-7/8)	
LNAV/VNAV DA		740-1 1/8	346 (400-1 1/8)	
LNAV MDA	820-1	426 (500-1)	820-1 1/4	426 (500-1 1/4)
CIRCLING	1000-1	603 (700-1)	1300-2 3/4 903 (1000-2 3/4)	1380-3 983 (1000-3)

ELEV 397 TDZE 394

MIRL Rwy 7-25 and 14-32

The diagram shows the layout of the TROY MUNI AT N KENNETH CAMPBELL FIELD (TOI). It includes the runway layout, the tower location, and various navigational aids. The diagram shows the runway layout, the tower location, and various navigational aids.

RNAV (GPS) RWY 25

SE-4, 31 DEC 2020 to 28 JAN 2021

SE-4, 31 DEC 2020 to 28 JAN 2021