

MILLEDGEVILLE, GEORGIA

AL-5729 (FAA)

20310

APP CRS	Rwy Idg	5509
096°	TDZE	385
	Apt Elev	385

RNAV (GPS) RWY 10  
BALDWIN COUNTY RGNL (MLT)

RNP APCH.

**T** Rwy 10 helicopter visibility reduction below  $\frac{3}{4}$  SM NA. Inop table does not apply to Cats  
**A** A/B. When local altimeter setting not received, use Middle Georgia Rgnl altimeter setting and increase all MDA 100 feet and increase LNAV visibility Cat C/D  $\frac{1}{4}$  SM and Circling Cat C  $\frac{1}{2}$  SM. VDP NA when using Middle Georgia Rgnl altimeter setting.

MALSF



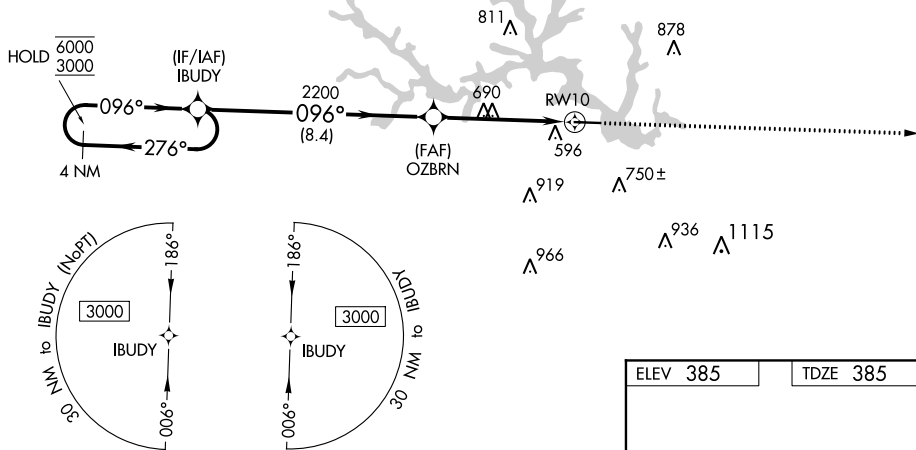
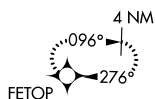
**MISSED APPROACH:**  
Climb to 3000 direct  
FETOP and hold.

AWOS-3  
120.925

ATLANTA APP CON ★  
124.2 279.6

UNICOM  
122.975 (CTAF) 

MISSED APCH FIX



ELEV 385

TDZE 385

CATEGORY	A	B	C	D
LNAV MDA	1000-1	615 (700-1)	1000-1½	615 (700-1½)
<b>C</b> CIRCLING	1000-1	615 (700-1)	1100-2 715 (800-2)	1280-3 895 (900-3)

MIRL Rwy 10-28 **L**

MILLEDGEVILLE, GEORGIA  
Amdt 2A 08NOV18

33°09'N-83°14'W

BALDWIN COUNTY RGNL (MLJ)  
RNAV (GPS) RWY 10

SE-4, 31 DEC 2020 to 28 JAN 2021