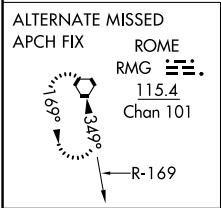
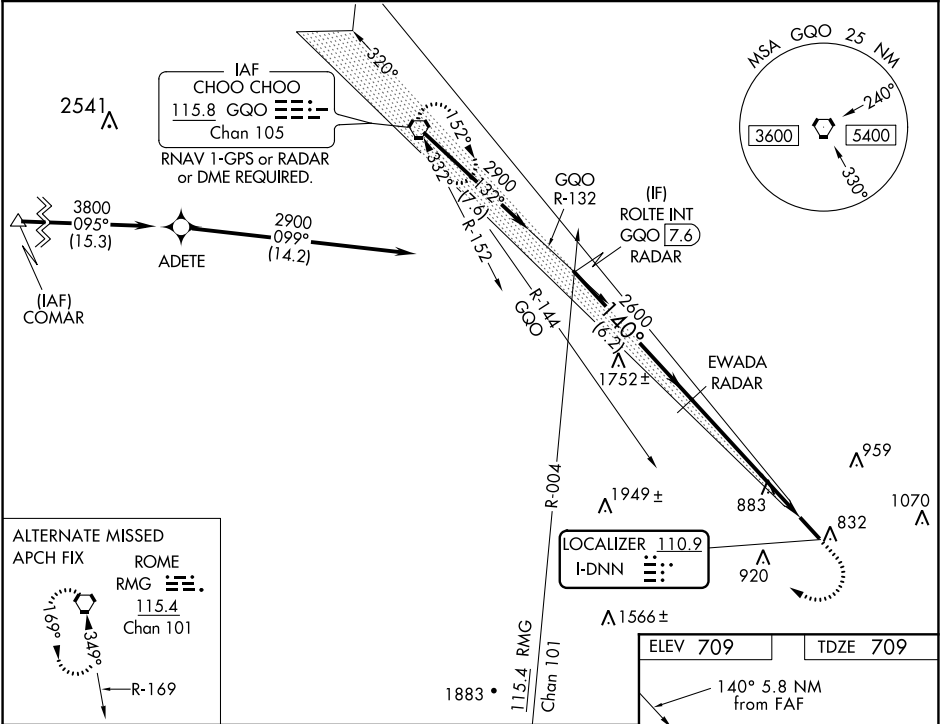


LOC I-DNN 110.9	APP CRS 140°	Rwy Idg TDZE Apt Elev	5496 709 709
---------------------------	------------------------	-----------------------------	---

ILS or LOC RWY 14
DALTON MUNI (DNN)

RADAR required to define EWADA. From COMAR: RNAV 1-GPS required.			MALSR	MISSED APPROACH: Climb to 1700 then climbing right turn to 3100 on heading 300° and GGO VORTAC R-144 to GGO VORTAC and hold.
Autopilot coupled approach NA below 1200 MSL. Circling Rwy 32 NA at night. DME from GGO VORTAC. Simultaneous reception of I-DNN and GGO DME required. Rwy 14 helicopter visibility reduction below ¾ SM NA. Inop table does not apply to S-ILS 14. For inop ALS, increase S-LOC 14 Cat A/B visibility to 1 SM and Cat C/D to 1½ SM.				
AWOS-3PT 127.65	CHATTANOOGA APP CON ★ 125.1 379.1	CLNC DEL 120.25	UNICOM 122.975(CTAF) 0	



VGSI and ILS glidepath not coincident (VGSI Angle 3.00/TCH 55).			
CATEGORY	A	B	C
S-ILS 14	959-¾ 250 (300-¾)		
S-LOC 14	1320-¾ 611 (700-¾)	1320-1¾ 611 (700-1¾)	
CIRCLING	1320-1 611 (700-1)	1320-1¾ 611 (700-1¾)	1420-2¼ 711 (800-2¼)

ELEV 709	TDZE 709
FAF to MAP 5.8 NM	
Knots	60 90 120 150 180
Min:Sec	5:48 3:52 2:54 2:19 1:56

SE-4, 31 DEC 2020 to 28 JAN 2021

SE-4, 31 DEC 2020 to 28 JAN 2021