

WAAS
CH **81829**
W32A

APP CRS
320°

Rwy Idg
TDZE **179**
Apt Elev **187**

RNAV (GPS) RWY 32

STATESBORO-BULLOCH COUNTY (TBR)

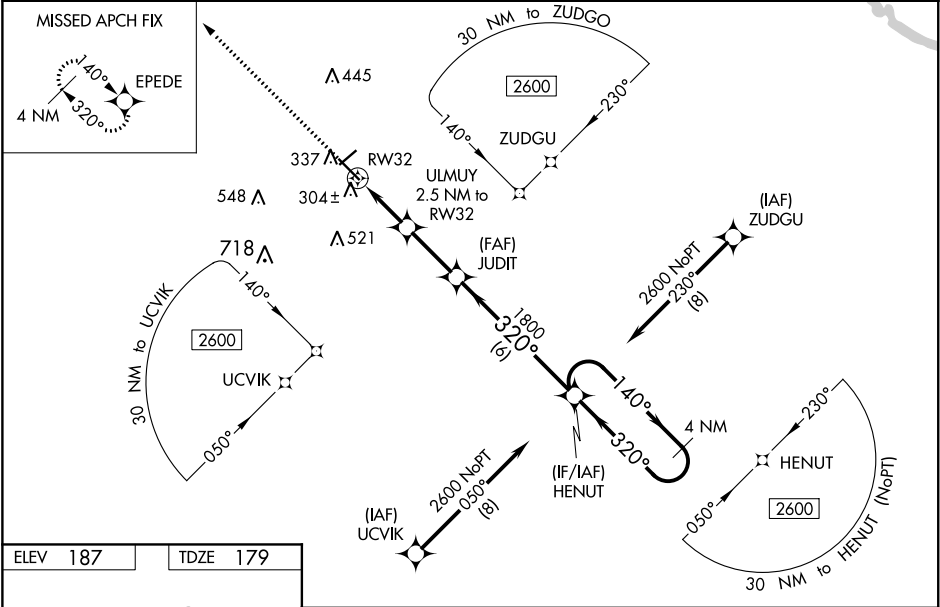
⚠

Inop table does not apply to LPV. For uncompensated Baro-VNAV systems, LNAV/VNAV NA below -15°C (5°F) or above 54°C (130°F). DME/DME RNP-0.3 NA. Helicopter visibility reduction below ¾ SM NA. When local altimeter not received, use Sylvania altimeter setting and increase all DAs 28 feet and all MDAs 40 feet, increase LNAV/VNAV visibility all Cats and LNAV Cats C/D visibility ¼ mile, and increase Circling Cat C visibility ¼ mile. For inop MALSRL, increase LNAV Cat A/B visibility to 1 mile, and Cat C/D visibility to 1½ miles. For inop MALSRL when using Sylvania altimeter setting, increase LNAV Cat A/B visibility to 1 mile. Baro-VNAV and VDP NA when using Sylvania altimeter setting.

MALSRL

MISSED APPROACH:
Climb to 2600 direct
EPEDE and hold.

AWOS-3 119.025	SAVANNAH APP CON★ 118.4 354.0	UNICOM 122.725 (CTAF) 0
--------------------------	---	-----------------------------------



ELEV 187

TDZE 179

2600

EPEDE

ULMUJ 2.5 NM to RW32

JUDIT 1800

HENUT

4 NM Holding Pattern

140°

320°

2600

GP 3.00°

TCH 49°

*LNAV only.

*1.1 NM to RW32

*1000

1.1

1.4

2.5 NM

6 NM

CATEGORY	A	B	C	D
LPV DA		432-¾	253 (300-¾)	
LNAV/VNAV DA		583-1	404 (400-1)	
LNAV MDA		560-¾	381 (400-¾)	
C CIRCLING	640-1 453 (500-1)	840-1 653 (700-1)	840-1¾ 653 (700-1¾)	860-2¼ 673 (700-2¼)