

WAAS CH <b>53727</b> <b>W08A</b>	APP CRS <b>081°</b>	Rwy Idg TDZE Apt Elev	<b>5003</b> <b>201</b> <b>201</b>
--	------------------------	-----------------------------	---

RNAV (GPS) RWY 8

BAXLEY MUNI (BHC)

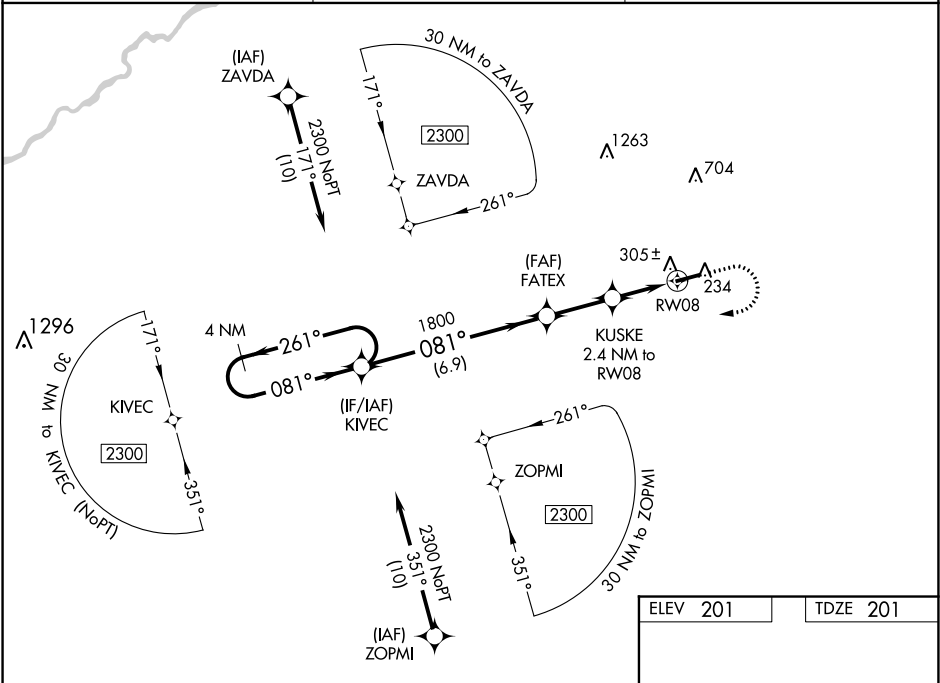
▼

▲ NA

Baro-VNAV NA when using Alma altimeter setting. For uncompensated Baro-VNAV systems, LNAV/VNAV NA below -15°C (5°F) or above 42°C (107°F). DME/DME RNP-0.3 NA. When local altimeter setting not received, use Alma altimeter setting and increase LPV DA to 513, LNAV/VNAV DA to 515 and all MDA 40 feet; increase LNAV Cals C and D visibility ½ mile. Helicopter visibility reduction below ¾ SM NA.

MISSED APPROACH:  
Climb to 1200 then climbing right turn to 2300 direct KIVEC and hold.

AWOS-3PT <b>118.2</b>	JACKSONVILLE CENTER <b>127.575 269.025</b>	UNICOM <b>122.8</b> (CTAF) <b>0</b>
--------------------------	---	--



4 NM Holding Pattern

VGSI and RNAV glidepath not coincident (VGSI Angle 3.00/TCH 31).

2300 ← 261°

→ 081°

GP 3.00°

TCH 59

FATEX

1800

KUSKE

2.4 NM to RW08

\*1020

6.9 NM

2.4 NM

2.4 NM

CATEGORY	A	B	C	D
LPV DA		484-1	283 (300-1)	
LNAV/VNAV DA		486-1	285 (300-1)	
LNAV MDA		560-1	359 (400-1)	
CIRCLING	620-1 419 (500-1)	660-1 459 (500-1)	660-1½ 459 (500-1½)	760-2 559 (600-2)

ELEV 201

TDZE 201

5003 X 75

081° to RW08

MIRL Rwy 8-26 **0**

SE-4, 31 DEC 2020 to 28 JAN 2021

SE-4, 31 DEC 2020 to 28 JAN 2021