

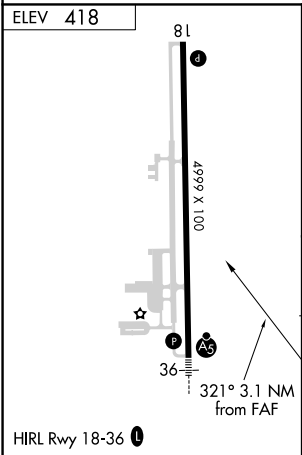
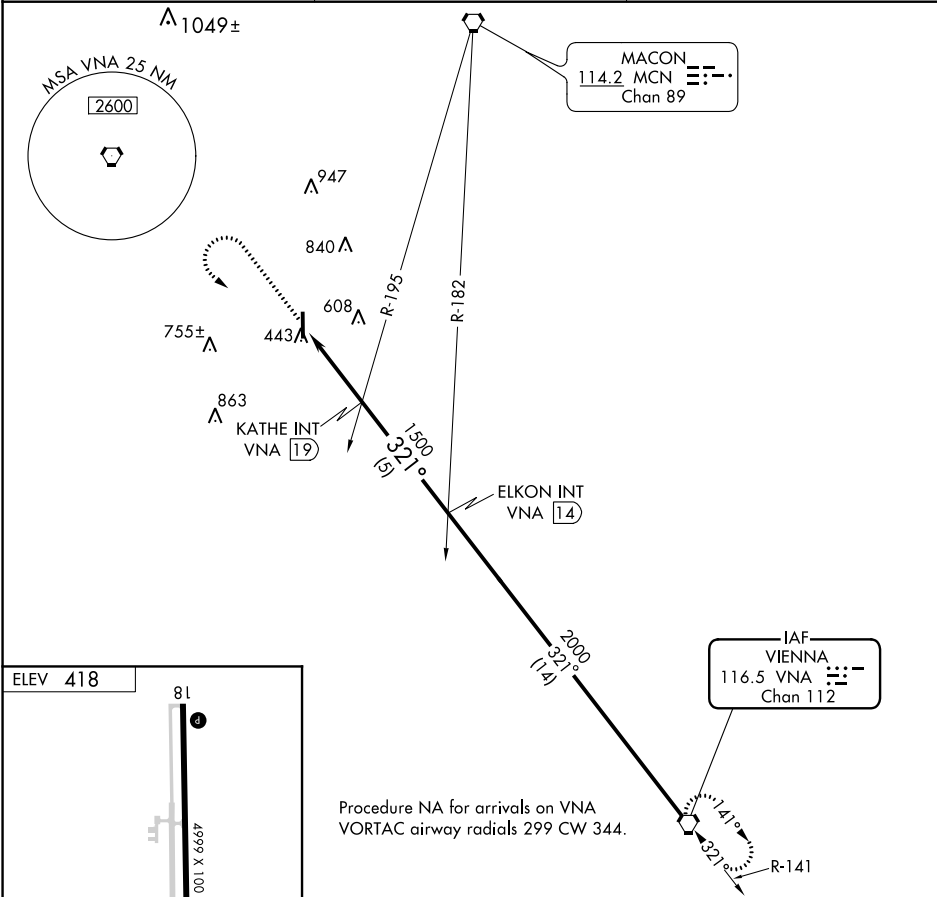
VORTAC VNA <b>116.5</b> Chan <b>112</b>	APP CRS <b>321°</b>	Rwy Idg TDZE Apt Elev <b>N/A</b> <b>N/A</b> <b>418</b>
---	------------------------	---

VOR-A

PERRY-HOUSTON COUNTY (PXE)

<b>NA</b> If local altimeter setting not received, use Macon altimeter setting and increase all MDAs 40 feet.	MISSED APPROACH: Climb to 1300 then climbing left turn to 2000 direct VNA VORTAC and hold.
--	---

AWOS-3 <b>123.825</b>	ATLANTA APP CON★ <b>124.2 279.6</b>	UNICOM <b>122.725 (CTAF)</b>
--------------------------	--	---------------------------------



FAF to MAP 3.1 NM						CATEGORY	A	B	C	D
Knots	60	90	120	150	180	CIRCLING	880-1	462 (500-1)	880-1½ 462 (500-1½)	980-2 562 (600-2)
Min:Sec	3:06	2:04	1:33	1:14	1:02					

VOR-A

SE-4, 31 DEC 2020 to 28 JAN 2021

SE-4, 31 DEC 2020 to 28 JAN 2021