


WAAS CH 72924 W02A	APP CRS 017°	Rwy Idg 5000 TDZE 361 Apt Elev 365
--	------------------------	---

RNAV (GPS) RWY 2

FITZGERALD MUNI (FZG)

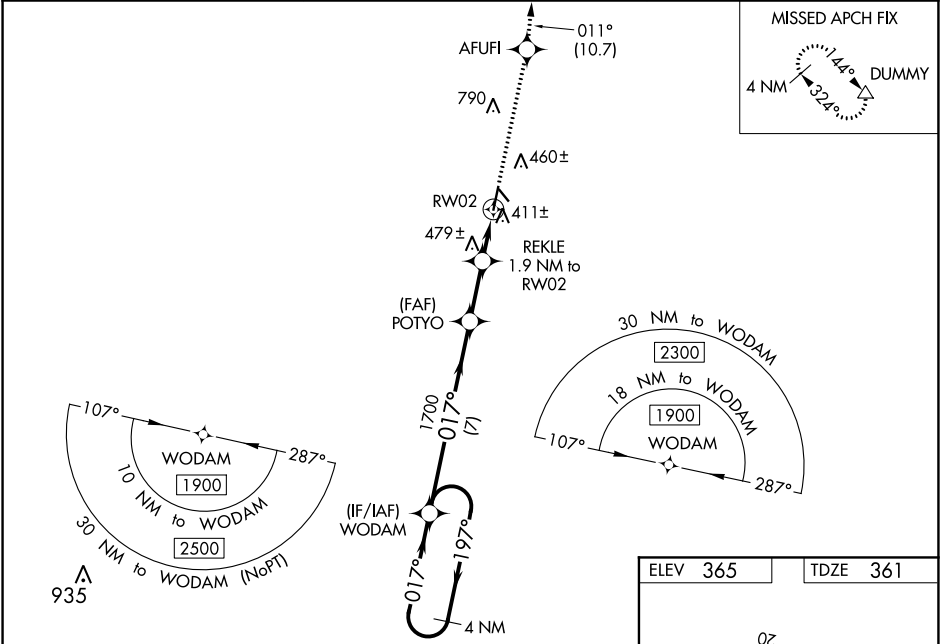
⚠ Circling NA to Rwy's 15 and 33. Baro-VNAV and VDP NA when using Tifton altimeter setting. DME/DME RNP-0.3 NA. For uncompensated Baro-VNAV systems, LNAV/VNAV NA below -15°C or above 54°C. When local altimeter setting not received, use Tifton altimeter setting: increase LPV DA to 656 feet and LNAV/VNAV DA to 691 feet; increase LNAV/VNAV all Cats visibility 1/8 SM, LNAV Cats C/D visibility 1/8 SM, and Circling Cats C/D visibility 1/4 SM. Inop table does not apply to LPV all Cats and LNAV Cats C/D. For inop ALS increase LNAV/VNAV Cats A/B visibility to 7/8 SM. For inop ALS when using Tifton altimeter setting increase LPV Cats A/B visibility to 7/8 SM and LNAV/VNAV Cats A/B visibility to 1 SM.

ODALS



MISSED APPROACH:
Climb to 2300 direct
AFUFI and on track
011° to DUMMY and
hold.

AWOS-3 118.625	JACKSONVILLE CENTER 127.575 269.025	UNICOM 123.0 (CTAF) 0
--------------------------	---	---------------------------------



VGSI and RNAV glidepath not coincident (VGSI Angle 3.00/TCH 31).			
4 NM Holding Pattern	WODAM	2300 AFUFI tr 011° DUMMY	
1900 ← 197°	→ 017°	POTYO 1700	REKLE 1.9 NM to RW02
GP 3.00° TCH 40			*1.1 NM to RW02
			*1000
			7 NM 2.2 NM 0.8 NM 1.1 NM
CATEGORY	A	B	C
LPV DA	611-3/4 250 (300-3/4)		
LNAV/VNAV DA	646-3/4 285 (300-3/4)		
LNAV MDA	740-3/4 379 (400-3/4)	740-1 379 (400-1)	
CIRCLING	880-1 515 (600-1)	1160-2 795 (800-2 1/4)	1160-2 795 (800-2 1/2)

