

WAAS CH 86501 W18A	APP CRS 185°	Rwy Idg TDZE 740 Apt Elev 764
--	------------------------	---

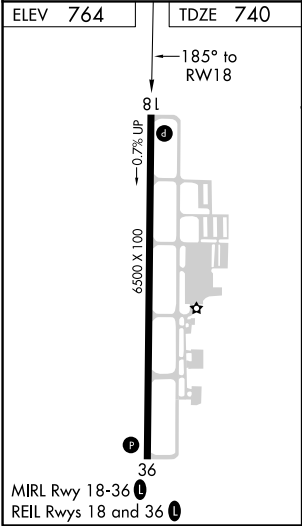
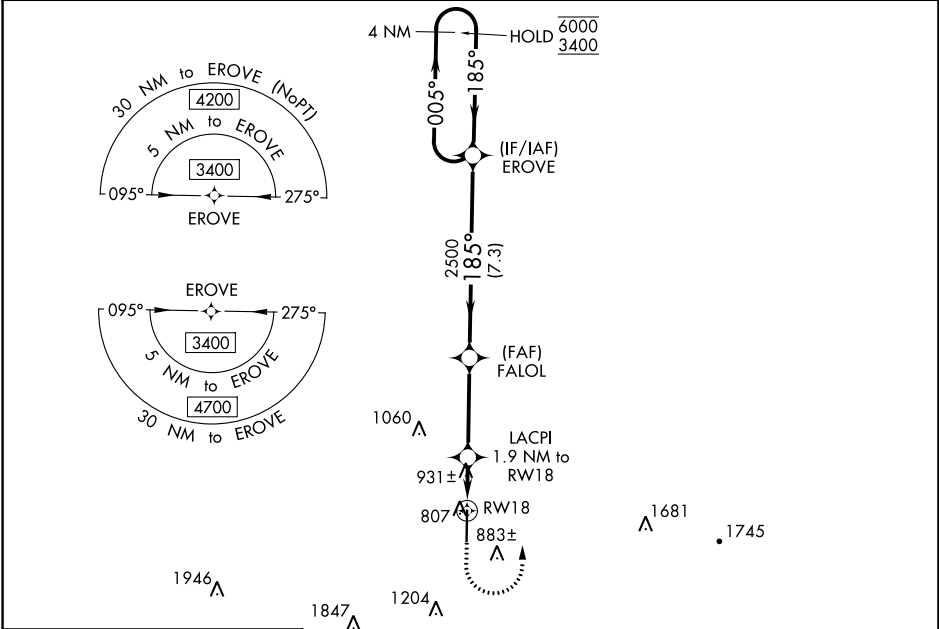
RNAV (GPS) RWY 18


HUNTSVILLE EXECUTIVE TOM SHARP JR FIELD (MDQ)

RNP APCH.

<p>▼ Rwy 18 helicopter visibility reduction below ¾ SM NA. ▲ For uncompensated Baro-VNAV systems, procedure NA below -16°C or above 54°C.</p>	<p>MISSED APPROACH: Climb to 1500 then climbing left turn to 3400 direct EROVE and hold.</p>
---	--

AWOS-3PT 120.0	HUNTSVILLE APP CON ★ 125.6 354.1	GCO 121.725	UNICOM 123.0 (CTAF) 0
--------------------------	--	-----------------------	---------------------------------



<div><div><div>1500</div><div>3400</div><div>EROVE</div></div><div><div><div>*LNAV only.</div><div>RW18</div><div>LACPI 1.9 NM to RW18</div><div>FALOL 2500</div><div>EROVE</div><div>4 NM Holding Pattern</div></div><div><div>2552 Δ</div><div>Δ 1935</div></div></div><div><div><div>005° \rightarrow</div><div>\leftarrow 185°</div></div><div><div>6000</div><div>3400</div></div><div><div>GP 3.00°</div><div>TCH 43</div></div></div></div>				
<div><div><div>1.4 NM</div><div>0.5 NM</div><div>3.6 NM</div><div>7.3 NM</div></div></div>				
CATEGORY	A		B	C
LPV DA	940- $\frac{3}{4}$		200 (200- $\frac{3}{4}$)	
LNAV/VNAV DA	1250-1 $\frac{3}{4}$		510 (500-1 $\frac{3}{4}$)	
LNAV MDA	1200-1	460 (500-1)	1200-1 $\frac{3}{8}$	460 (500-1 $\frac{3}{8}$)
 CIRCLING	1260-1	496 (500-1)	1560-2 $\frac{1}{4}$ 796 (800-2 $\frac{1}{4}$)	2000-3 1236 (1300-3)

SE-4, 31 DEC 2020 to 28 JAN 2021

SE-4, 31 DEC 2020 to 28 JAN 2021