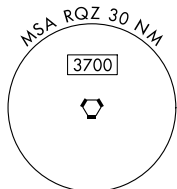
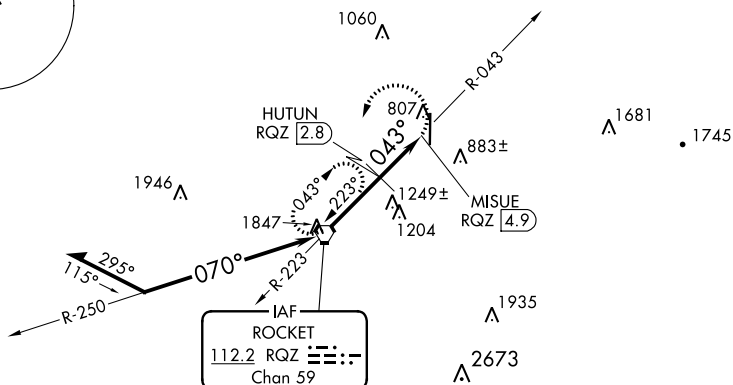


VOR-B
HUNTSVILLE EXECUTIVE TOM SHARP JR FIELD (MDQ)

MISSED APPROACH: Climbing left turn to 3000 direct RQZ VORTAC and hold.

UNICOM
123.0 (CTAF) **L**

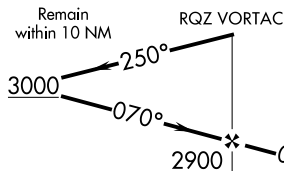
NoPT for arrival on RQZ VORTAC
airway radials 147 CW 261.



R-2104

R-2104B

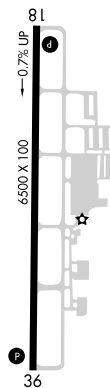
ELEV 764



3000	RQZ
------	-----

AUTUN
 PQ7 28

043° to



MIRL Rwy 18-36 **L**
REIL Rwy 18 and 36 **L**

HUNTSVILLE EXECUTIVE TOM SHARP JR FIELD (MDQ)
34°52'N-86°33'W VOP-B

VOR-B