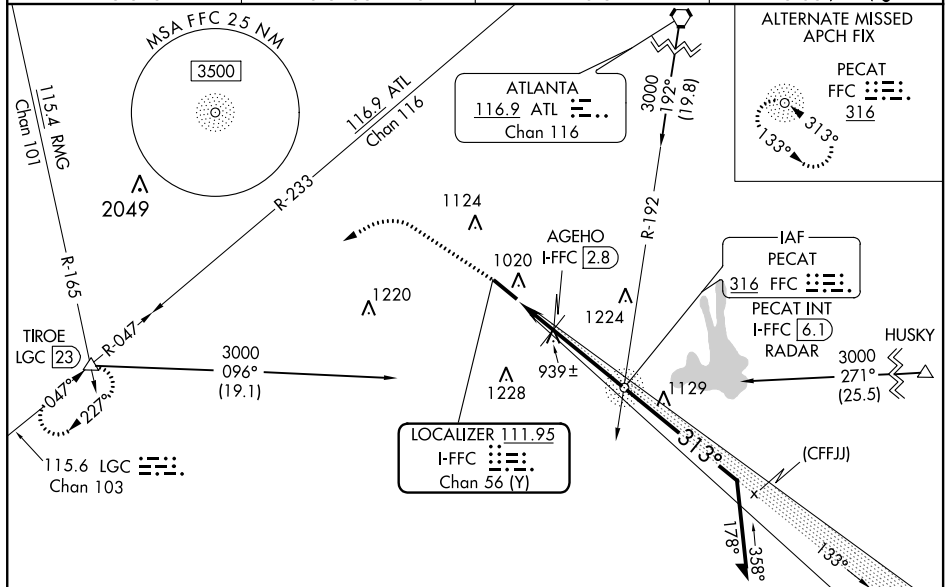


ILS or LOC RWY 31
ATLANTA RGNL FALCON FIELD (FFC)

ODALS

MISSED APPROACH: Climb to 1700 then climbing left turn to 4000 on heading 275° and LGC VORTAC R-047 to TIROE INT/LGC 23 DME and hold.

ALTERNATE MISSED
APCH FIX



| CATEGORY | A | B | C | D |
|-------------------|--------------------|-------------|-------------------------|-------------------------|
| S-ILS 31 | 1082-1 274 (300-1) | | | |
| S-LOC 31 | 1360-1 | 552 (600-1) | 1360-1½ | 552 (600-1½) |
| C CIRCLING | 1360-1 | 552 (600-1) | 1440-1¾ 632 (700-1¾) | 1540-2¼ 732 (800-2¼) |

| AGEHO FIX MINIMUMS (DME REQUIRED) | | | | | |
|-----------------------------------|--------|-------------|-------------------------|-------------------------|--|
| S-LOC 31 | 1200-1 | 392 (400-1) | 1200-1½ | 392 (400-1½) | |
| C CIRCLING | 1320-1 | 512 (600-1) | 1440-1¾ 632 (700-1¾) | 1540-2¼ 732 (800-2¼) | |

SE-4, 31 DEC 2020 to 28 JAN 2021