

WAAS
CH **72706**
W31A

APP CRS
313°

Rwy Idg
TDZE
Apt Elev
5568
807
808

RNAV (GPS) RWY 31

ATLANTA RGNL FALCON FIELD (F'F'C)

RNP APCH.

▼

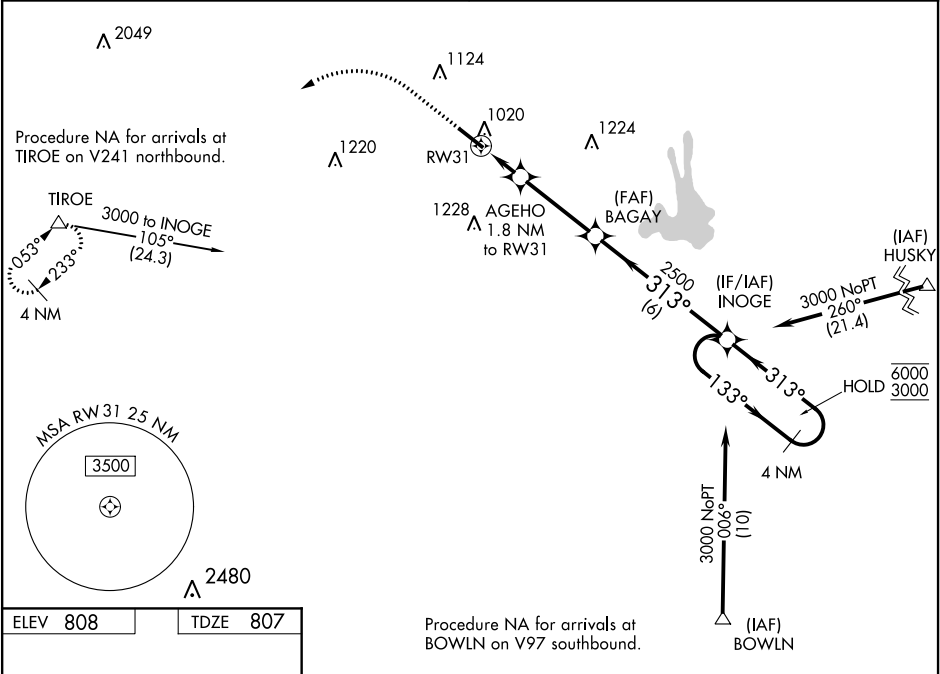
⚠

Rwy 31 helicopter visibility reduction below ¾ SM NA. Inop table does not apply to LPV. For inop ALS, increase LNAV/VNAV Cat A/B visibility to 1½ SM. For uncompensated Baro-VNAV systems, LNAV/VNAV NA below -8°C or above 54°C. Circling Rwy 13 NA at night.

ODALS

MISSED APPROACH: Climb to 1400 then climbing left turn to 4000 direct TIROE and hold.

ASOS 118.525	ATLANTA APP CON 119.8 354.125	CLNC DEL 119.8	UNICOM 123.05 (CTAF) 0
------------------------	---	--------------------------	----------------------------------



ELEV 808

TDZE 807

REIL Rwy 13 0

MIRL Rwy 13-31 0

313° to RW31

5768 x 100

1400	4000	TIROE	VGSi and RNAV glidepath not coincident (VGSi Angle 3.00/TCH 45).	4 NM
			INOGE Holding Pattern	
*LNAV only.	AGEHO 1.8 NM to RW31	BAGAY 2500	INOGE 133° 6000 313° 3000	GP 3.00° TCH 38
	RW31	*1400		
	1.8	3.4 NM	6 NM	
CATEGORY	A	B	C	D
LPV DA		1059-¾	252 (300-¾)	
LNAV/VNAV DA		1189-1	382 (400-1)	
LNAV MDA	1280-¾	473 (500-¾)	1280-1¼	473 (500-1¼)
CIRCLING	1320-1	512 (600-1)	1440-1¾ 632 (700-1¾)	1540-2¼ 732 (800-2¼)