

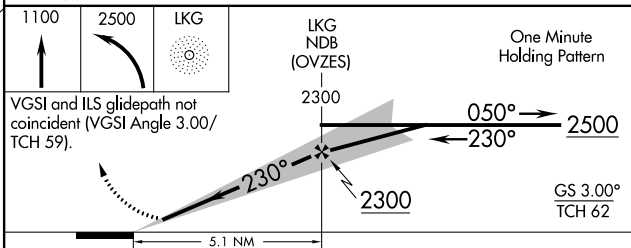
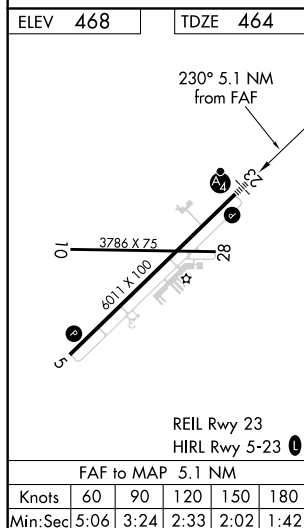
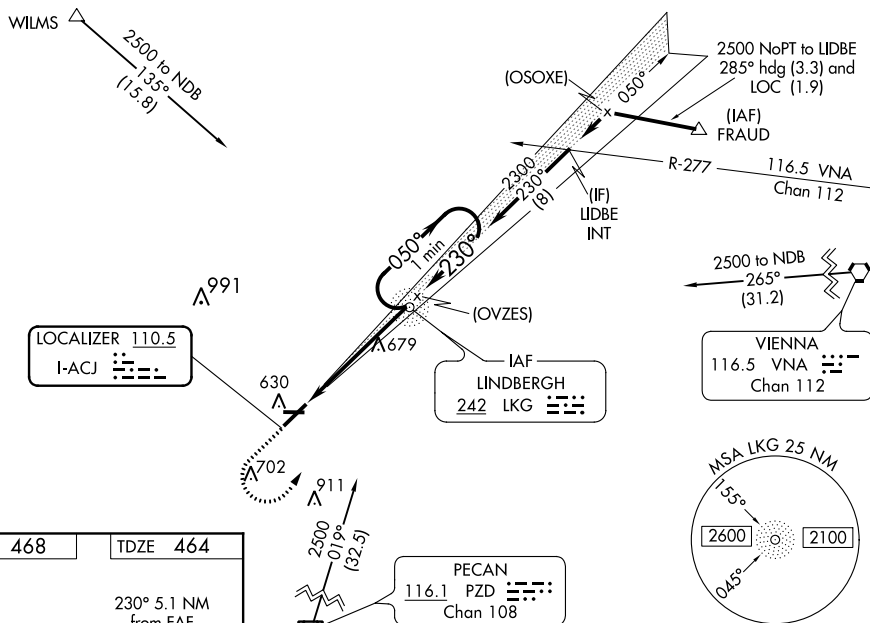

ILS or LOC RWY 23  
JIMMY CARTER RGNL (ACT)

**T** Rwy 23 helicopter visibility reduction below  $\frac{3}{4}$  SM NA. When local altimeter setting not received, use Columbus altimeter setting and increase GL DA 114 feet and all MDA 120 feet; increase ILS all Cats visibility  $\frac{1}{2}$  mile, increase LOC Cats C and D visibility  $\frac{3}{4}$  mile, and increase Circling Cats C and D visibility  $\frac{1}{4}$  mile. For inop MALSF, when using Columbus altimeter setting, increase ILS all Cats visibility to  $\frac{1}{2}$  mile, increase LOC Cat D visibility to  $\frac{1}{2}$  mile, and increase Circling Cat D visibility to  $\frac{1}{4}$  mile.

**A** NA  
Circling Rwy 10, 28 NA at night.



**MISSED APPROACH:** Climb to 1100 then climbing left turn to 2500 direct LKG NDB and hold.

UNICOM  
122.8 (CTAF) 

| CATEGORY | A  | B | C   | D                     |
|----------|--|---|---|-----------------------|
| S-ILS 23 | 775- <sup>3</sup> / <sub>4</sub> 311 (400- <sup>3</sup> / <sub>4</sub> ) |   |   |                       |
| S-LOC 23 | 940- <sup>3</sup> / <sub>4</sub> 476 (500- <sup>3</sup> / <sub>4</sub> ) |   | 940-1 <sup>1</sup> / <sub>8</sub> 476 (500-1 <sup>1</sup> / <sub>8</sub> )    |                       |
| CIRCLING | 940-1 472 (500-1)  |   | 940-1 <sup>1</sup> / <sub>2</sub><br>472 (500-1 <sup>1</sup> / <sub>2</sub> ) | 1020-2<br>552 (600-2) |

SE-4, 31 DEC 2020 to 28 JAN 2021

SE-4, 31 DEC 2020 to 28 JAN 2021