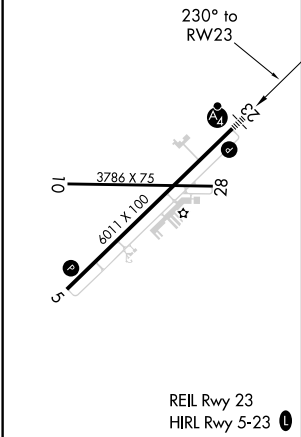
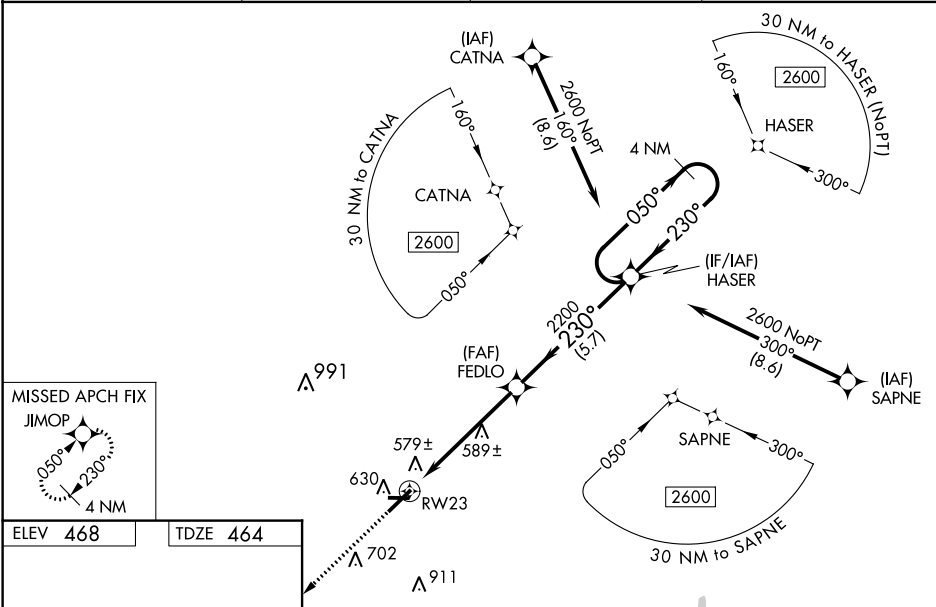


WAAS CH 70724 W23A	APP CRS 230°	Rwy Idg TDZE Apt Elev	6011 464 468
--	------------------------	-----------------------------	---

RNAV (GPS) RWY 23
JIMMY CARTER RGNL (ACJ)

RNP APCH.	Baro-VNAV NA and VDP NA when using Columbus altimeter setting. For uncompensated Baro-VNAV systems, LNAV/VNAV NA below -15°C or above 41°C. For inop ALS when using Columbus altimeter setting, increase LPV and LNAV/VNAV all Cats visibility to 1½ SM, LNAV Cats C and D visibility to 1½ SM, and Circling Cat D visibility to 2¼ SM. Rwy 23 helicopter visibility reduction below ¾ SM NA. When local altimeter setting not received, use Columbus altimeter setting and increase LPV DA to 874, LNAV/VNAV DA to 879 and all visibilities ¾ SM; increase all MDA 120 feet and LNAV Cats C and D visibility ¾ SM, and Circling Cat D visibility ¼ SM. For inop ALS, increase LPV all Cats, LNAV/VNAV Cat D, and LNAV Cat D visibility to 1 SM. Circling Rwy 10, 28 NA at night.	MALSF	MISSED APPROACH: Climb to 2600 direct JIMOP and hold.
-----------	---	-------	--

AWOS-3 128.375	ATLANTA APP CON★ 124.2 323.1	CLNC DEL 119.95	UNICOM 122.8 (CTAF)
--------------------------	--	---------------------------	-------------------------------



CATEGORY				A	B	C	D
LPV				DA	760-¾	296 (300-¾)	
LNAV/VNAV				DA	765-¾	301 (300-¾)	
LNAV				MDA	840-¾	376 (400-¾)	840-¾ 376 (400-¾)
CIRCLING					940-1	472 (500-1)	940-1½ 472 (500-1½) 1020-2 552 (600-2)

SE-4, 31 DEC 2020 to 28 JAN 2021

SE-4, 31 DEC 2020 to 28 JAN 2021