

WAAS CH 77824 W05A	APP CRS 050°	Rwy Idg TDZE Apt Elev	6011 468 468
--	------------------------	-----------------------------	---

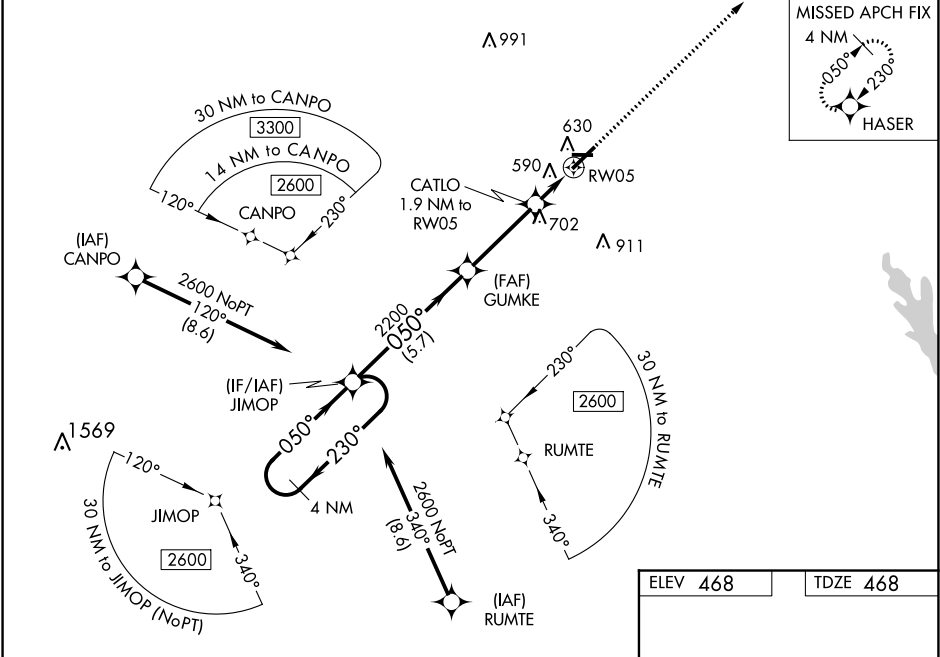
RNAV (GPS) RWY 5
JIMMY CARTER RGNL (ACJ)

RNP APCH.

Baro-VNAV NA when using Columbus altimeter setting. For uncompensated Baro-VNAV systems, LNAV/VNAV NA below -15°C or above 40°C. Rwy 5 helicopter visibility reduction below 3/4 SM NA. When local altimeter setting not received, use Columbus altimeter setting and increase LPV DA to 832 and visibility 1/4 SM, LNAV/VNAV DA to 954 and visibility 3/8 SM; increase all MDA 120 feet and LNAV Cats C and D visibility 3/8 SM, and Circling Cat D visibility 1/2 SM. Circling Rwy 10, 28 NA at night.

MISSED APPROACH:
Climb to 2600 direct
HASER and hold.

AWOS-3 128.375	ATLANTA APP CON ★ 124.2 323.1	CLNC DEL 119.95	UNICOM 122.8 (CTAF) 0
--------------------------	---	---------------------------	---------------------------------



4 NM Holding Pattern		VGSI and RNAV glidepath not coincident (VGSI Angle 3.00/TCH 58).		2600	HASER
GP 3.00° TCH 45		JIMOP		2200	*LNAV only.
2600 ← 230°		→ 050°		050°	
2200		GUMKE		CATLO 1.9 NM to RW05	
5.7 NM		3.4 NM		1.9 NM	
CATEGORY	A	B	C	D	
LPV DA		718-1	250 (300-1)		
LNAV/VNAV DA		840-1	372 (400-1)		
LNAV MDA		840-1	372 (400-1)		
CIRCLING	940-1	472 (500-1)	940-1½ 472 (500-1½)	1020-2 552 (600-2)	

