

NDB	MQW	APP CRS	Rwy Idg	5000
	280	211°	TDZE	202
			Apt Elev	203

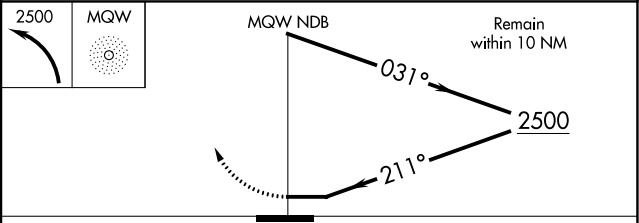
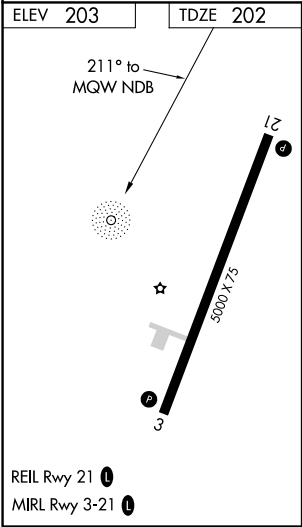
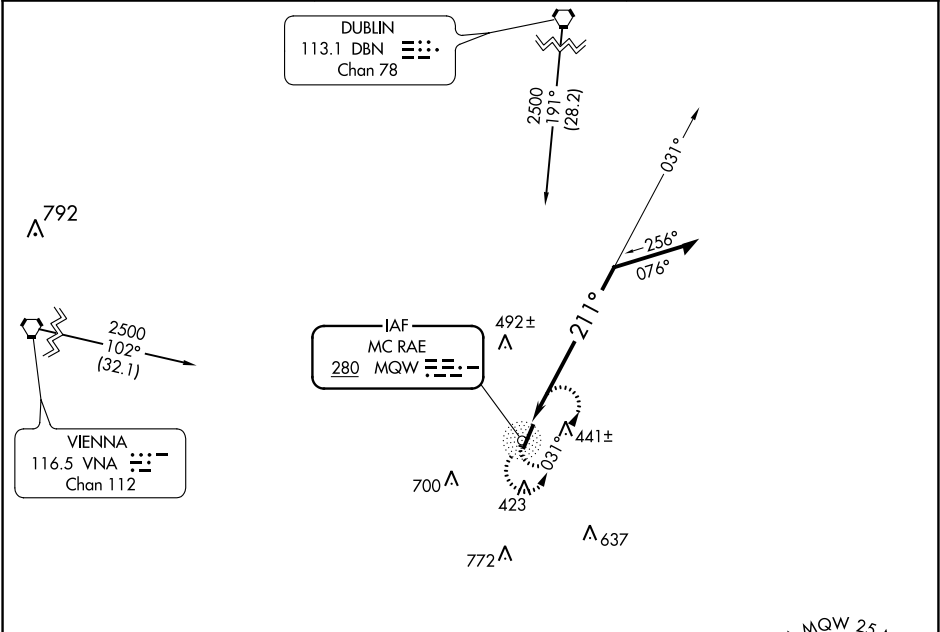
NDB RWY 21
TELFAIR-WHEELER (MQW)

▼
▲ NA

Use Vidalia altimeter setting; when not received use Alma altimeter setting and increase all MDA 20 feet, and increase S-21 and Circling Cat C and D visibility ¼ mile. Rwy 21 helicopter visibility reduction below 1 SM NA. Straight-in Rwy 21 NA at night, Circling Rwy 21 NA at night.

MISSED APPROACH: Climbing left turn to 2500 in MQW NDB holding pattern, continue climb-in-hold to 2500.

VDI AWOS-3 119.925	JACKSONVILLE CENTER 127.575 269.025	CTAF 122.9 0
------------------------------	---	------------------------



CATEGORY	A	B	C	D
S-21	1000-1 798 (800-1)	1000-1¼ 798 (800-1¼)	1000-2¼ 798 (800-2¼)	1000-2½ 798 (800-2½)
CIRCLING	1000-1 797 (800-1)	1000-1¼ 797 (800-1¼)	1000-2¼ 797 (800-2¼)	1000-2½ 797 (800-2½)

SE-4, 31 DEC 2020 to 28 JAN 2021

SE-4, 31 DEC 2020 to 28 JAN 2021