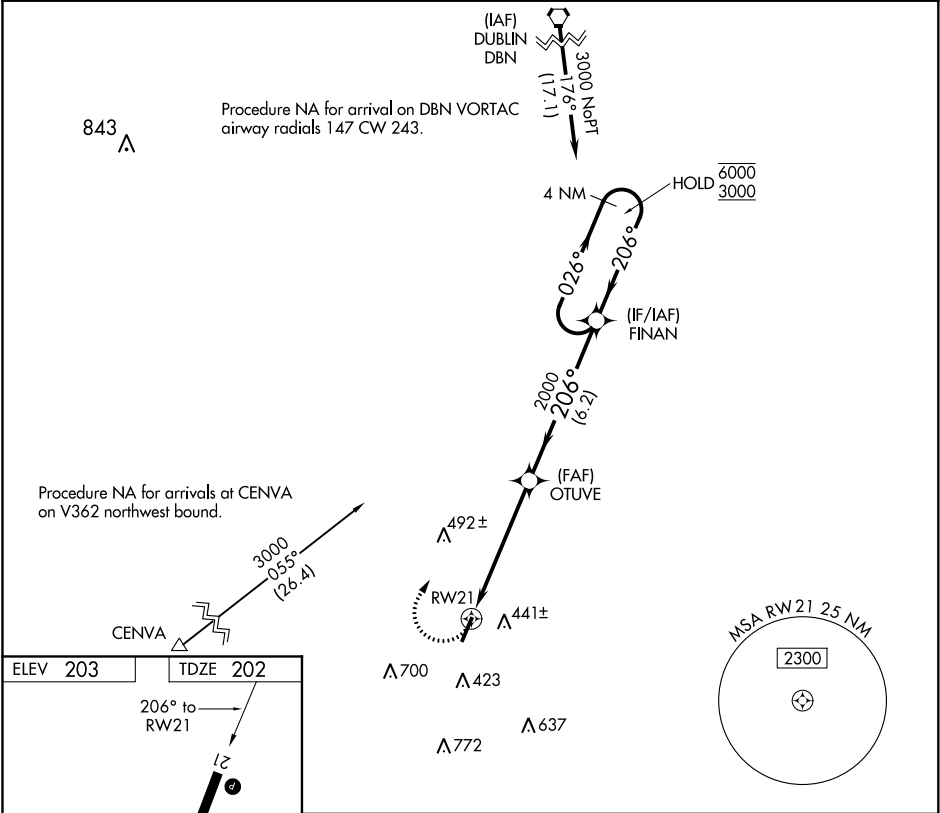


APP CRS	Rwy Idg	5000
206°	TDZE	202
	Apt Elev	203

RNAV (GPS) RWY 21
TELFAIR-WHEELER (MQW)

RNP APCH.	Procedure NA at night. Rwy 21 helicopter visibility reduction below 1 SM NA. Use Vidalia altimeter setting; when not received, use Alma altimeter setting and increase all MDA 20 feet and LNAV Cat C/D visibility 1/8 SM.	MISSED APPROACH: Climbing right turn to 3000 direct FINAN and hold.
-----------	--	---

VDI AWOS-3 119.925	JACKSONVILLE CENTER 127.575 269.025	CTAF 122.9 0
-----------------------	--	-----------------



3000	FINAN	VGSIs and descent angles not coincident (VGSi Angle 3.00/TCH 44).			
		OTUVE	FINAN	4 NM Holding Pattern	
		RW21	206°	026° → 6000	← 206° 3000
		$\triangle 3.12^\circ$	2000		
		5.3 NM	6.2 NM		
CATEGORY	A	B	C	D	
LNAV MDA	780-1	578 (600-1)	780-1 1/8	578 (600-1 1/8)	
CIRCLING	880-1	677 (700-1)	960-2 1/4	1140-3	
			757 (800-2 1/4)	937 (1000-3)	

SE-4, 31 DEC 2020 to 28 JAN 2021

SE-4, 31 DEC 2020 to 28 JAN 2021