

| | | | |
|--|------------------------|-----------------------------|---|
| WAAS CH 77815 W11A | APP CRS 103° | Rwy Idg TDZE Apt Elev | 5500 107 107 |
|--|------------------------|-----------------------------|---|

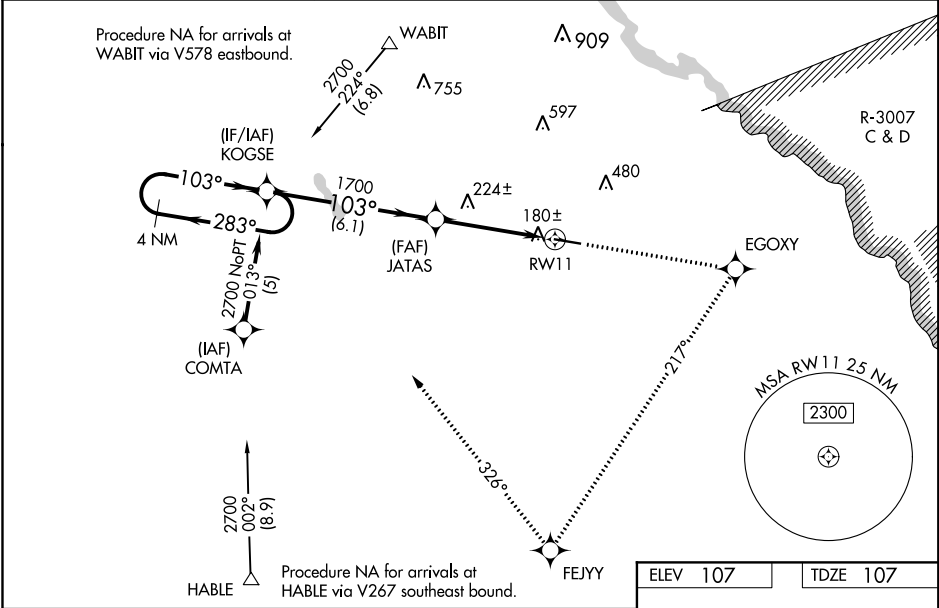
RNAV (GPS) RWY 11
JESUP-WAYNE COUNTY (JES)

NA

Baro-VNAV NA when using Savannah/Hilton Head Intl altimeter setting. For uncompensated Baro-VNAV systems, LNAV/VNAV NA below -15°C (5°F) or above 54°C (130°F). DME/DME RNP-0.3 NA. Helicopter visibility reduction below 1 statute mile NA. When local altimeter setting not received, use Savannah/Hilton Head Intl altimeter setting and increase LPV DA to 583, LNAV/VNAV DA to 597, and all MDA 140 feet; increase LPV all Cats and LNAV Cat C visibility ½ mile and LNAV/VNAV all Cats visibility ¼ mile. VDP NA when using Savannah/Hilton Head Intl altimeter setting.

MISSED APPROACH: Climb to 2700 direct EGOXY and right turn via track 217° to FEJYY and right turn via track 326° to KOGSE and hold.

| | | |
|----------------------------|--|-------------------------------|
| AWOS-3PT 118.125 | JACKSONVILLE CENTER 126.75 277.4 | UNICOM 122.8 (CTAF) |
|----------------------------|--|-------------------------------|



| | | | | | |
|--|----------------------|----------------------|------------------------|---------|-------|
| VGSI and RNAV glidepath not coincident (VGSI Angle 3.75/TCH 47). | | 2700 | EGOXY | FEJYY | KOGSE |
| 4 NM Holding Pattern | | ↑ | tr 217° | tr 326° | |
| KOGSE | | *LNAV only. | | | |
| GP 3.30° TCH 60 | | *0.8 NM to RW11 | | | |
| JATAS | | RW11 | | | |
| 6.1 NM | | 0.8 NM | | | |
| 3.5 NM | | | | | |
| CATEGORY | A | B | C | D | |
| LPV DA | 462-1 | 355 (400-1) | | NA | |
| LNAV/VNAV DA | 476-1¼ | 369 (400-1¼) | | NA | |
| LNAV MDA | 480-1 | 373 (400-1) | | NA | |
| CIRCLING | 500-1 393 (400-1) | 560-1 453 (500-1) | 560-1½ 453 (500-1½) | NA | |