

WAAS CH 53615 W29A	APP CRS 284°	Rwy Idg TDZE 96 Apt Elev 107
--	------------------------	--

RNAV (GPS) RWY 29

JESUP-WAYNE COUNTY (JES)

RNP APCH.

▼

Baro-VNAV and VDP NA when using Savannah/Hilton Head Intl altimeter setting.

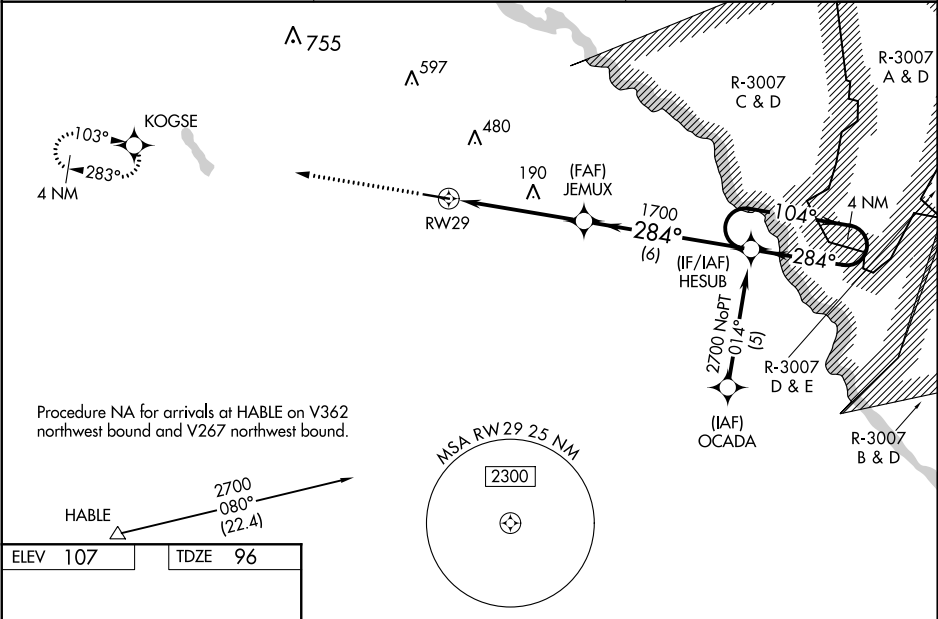
▲

For uncompensated Baro-VNAV systems, LNAV/VNAV NA below -15°C (5°F) or above 48°C (118°F). Rwy 29 helicopter visibility reduction below ¾ SM NA. When local altimeter setting not received, use Savannah/Hilton Head Intl altimeter setting and increase LPV DA to 485, LNAV/VNAV DA to 542, and all MDA 140 feet, increase LNAV Cat C visibility ¾ SM, Cat D ½ SM. Increase Circling Cat C visibility ½ SM, Cat D ½ SM. Inop table does not apply to LPV and LNAV/VNAV all Cats and LNAV Cats A/B. For inop ALS, increase LNAV Cat C visibility to 1½ SM. For inop ALS when using Savannah/Hilton Head Intl altimeter setting, increase LPV all Cats visibility to 1½ SM and LNAV/VNAV all Cats visibility to 1½ SM.

MALSF

MISSED APPROACH:
Climb to 2700 direct
KOGSE and hold.

AWOS-3PT 118.125	JACKSONVILLE CENTER 126.75 277.4	UNICOM 122.8 (CTAF) 0
----------------------------	--	---------------------------------



ELEV 107

TDZE 96

2700 KOGSE

VGSI and RNAV glidepath not coincident (VGSI Angle 3.00/TCH 37).

4 NM Holding Pattern

284° to RW29

5500 X 100

0.7% UP

284°

1700

104°

2700

GP 3.00° TCH 45

	A	B	C	D
CATEGORY				
LPV DA	364-1		268 (300-1)	
LNAV/VNAV DA	421-1¼		325 (400-1¼)	
LNAV MDA	500-1 404 (400-1)		500-1¼ 404 (400-1¼)	
CIRCLING	500-1 393 (400-1)	560-1 453 (500-1)	560-1½ 453 (500-1½)	780-2¼ 673 (700-2¼)