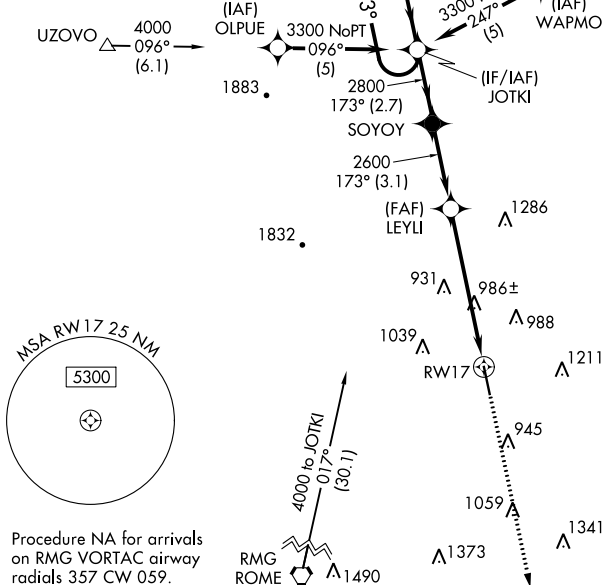
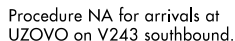


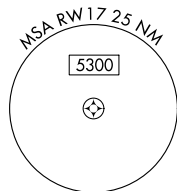
RNAV (GPS) RWY 17
TOM B DAVID FIELD (CZL)

▼ Baro-VNAV and VDP NA when using Rome altimeter setting. For uncompensated Baro-VNAV systems, LNAV/VNAV NA below -15°C (5°F) or above 45°C (113°F). When local altimeter setting not received, use Rome altimeter setting and increase all DA 31 feet and all MDA 40 feet; increase LNAV/VNAV all Cats visibility and LNAV Cat C/D visibility ¼ mile, and Circling Cat C visibility ¼ mile. Rwy 17 helicopter visibility reduction below ¾ SM NA.

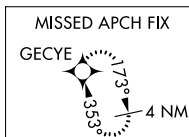
MISSED APPROACH:
Climb to 2800 direct
GECYE and hold.

UNICOM
122.8 (CTAF) **L**

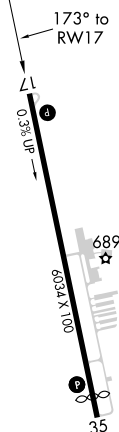
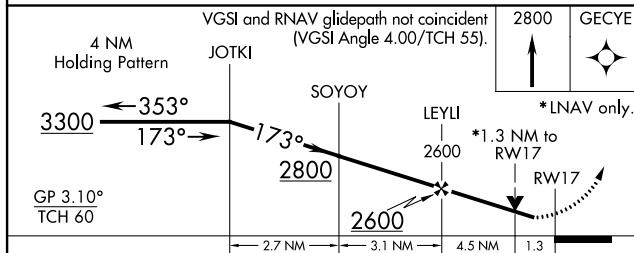
Procedure NA for arrivals at
ETONE on V5 southeast bound.




Procedure NA for arrivals
on RMG VORTAC airway
radials 357 CW 059.



ELEV 656		TDZE 639
----------	--	----------

MIRL Rwy 17-35 **L**

CATEGORY		A	B	C	D
LPV	DA	930-1 291 (300-1)			
INAV/ VNAV	DA	1100-1½ 461 (500-1½)			
INAV	MDA	1240-1 601 (600-1)	1240-1¾ 601 (600-1¾)		
 CIRCLING		1320-1 664 (700-1)	1580-2¾ 924 (1000-2¾)	1580-3 924 (1000-3)	