

WAAS CH 56521 W10A	APP CRS 097°	Rwy Idg TDZE 467 Apt Elev 501
--	------------------------	---

RNAV (GPS) RWY 10
THOMSON-McDUFFIE COUNTY (HQU)

RNP APCH.

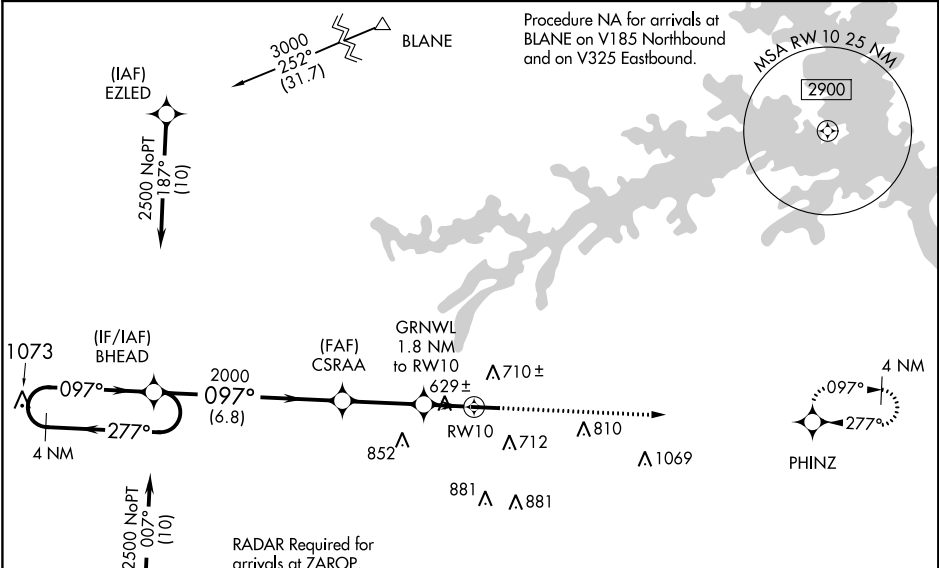
▼

▲

Baro-VNAV NA when using Daniel Field altimeter setting. For uncompensated Baro-VNAV systems, LNAV/VNAV NA below -15°C (5°F) or above 41°C (105°F). When local altimeter setting not received, use Daniel Field altimeter setting: increase LPV DA to 917 feet and visibility ½ SM, increase LNAV/VNAV DA to 1028 feet; increase all MDAs 80 feet, and visibility LNAV Cats C/D ½ SM, and Circling Cat C ¼ SM, and Circling Cat D ½ SM.

MISSED APPROACH:
Climb to 2500 direct PHINZ and hold.

AWOS-3 120.625	AUGUSTA APP CON ★ 126.8 270.3	UNICOM 122.8 (CTAF) 0
--------------------------	---	---------------------------------



ELEV 501

TDZE 467

4 NM Holding Pattern

BHEAD

2500

277°

097°

GP 3.00° TCH 49

CSRAA

2000

097°

GRNWL 1.8 NM to RW10

*1060

RW10

*LNAV only.

2500

PHINZ

097° to RW10

551.4 X 100

01.0% UP

28

CATEGORY	A	B	C	D
LPV DA		850-1¼	383 (400-1¼)	
LNAV/VNAV DA		961-1½	494 (500-1½)	
LNAV MDA	880-1	413 (400-1)	880-1¼	413 (400-1¼)
CIRCLING	1060-1 559 (600-1)	1080-1 579 (600-1)	1160-1¾ 659 (700-1¾)	1240-2¼ 739 (800-2¼)

HIRL Rwy 10-28 0

SE-4, 31 DEC 2020 to 28 JAN 2021

SE-4, 31 DEC 2020 to 28 JAN 2021