

WAAS CH <b>65999</b> <b>W05A</b>	APP CRS <b>053°</b>	Rwy Idg TDZE <b>700</b> Apt Elev <b>700</b>
--	------------------------	---

RNAV (GPS) RWY 5

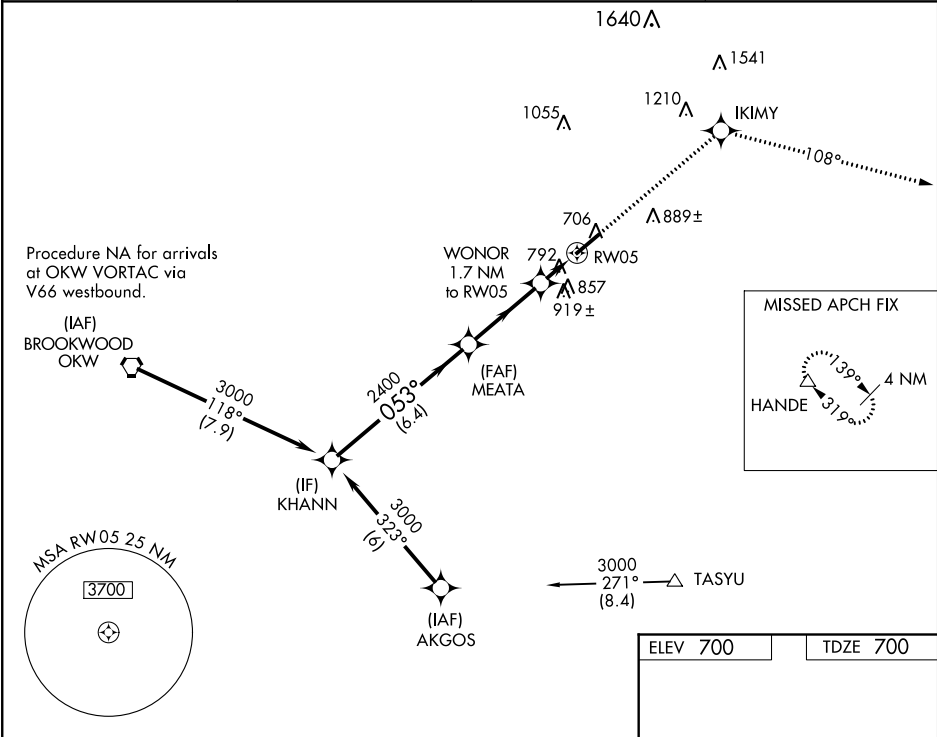
BESSEMER (EKY)

NA

Baro-VNAV NA when using Alabaster altimeter setting. For uncompensated Baro-VNAV systems, LNAV/VNAV NA below -16°C (4°F) or above 54°C (130°F). DME/DME RNP-0.3 NA. When local altimeter setting not received, use Alabaster altimeter setting and increase all DA 41 feet and all MDA 60 feet. Increase LNAV Cat C and D visibility ¼ mile.

MISSED APPROACH: Climb to 4000 direct IKIMY and on track 108° to HANDE and hold.

AWOS-3PT <b>118.825</b>	BIRMINGHAM APP CON <b>124.9 351.85</b>	CLNC DEL <b>123.75</b>	UNICOM <b>123.0 (CTAF) 0</b>
----------------------------	---	---------------------------	---------------------------------



Procedure Turn NA	KHANN			4000 ↑		IKIMY ✧		tr 108°		HANDE △	
	3000			MEATA 2400		WONOR 1.7 NM to RW05		* LNAV only			
	053°			2400		*1300		RW05			
	GP 3.00° TCH 60			6.4 NM		3.4 NM		1.7 NM			
CATEGORY	A		B		C		D				
LPV DA			900-3/4		200 (200-3/4)						
LNAV/ VNAV DA			1244-2		544 (600-2)						
LNAV MDA	1160-1	460 (500-1)			1160-1 1/4 460 (500-1 1/4)			1160-1 1/2 460 (500-1 1/2)			
CIRCLING	1200-1	500 (500-1)			1220-1 1/2 520 (600-1 1/2)			1260-2 560 (600-2)			

