

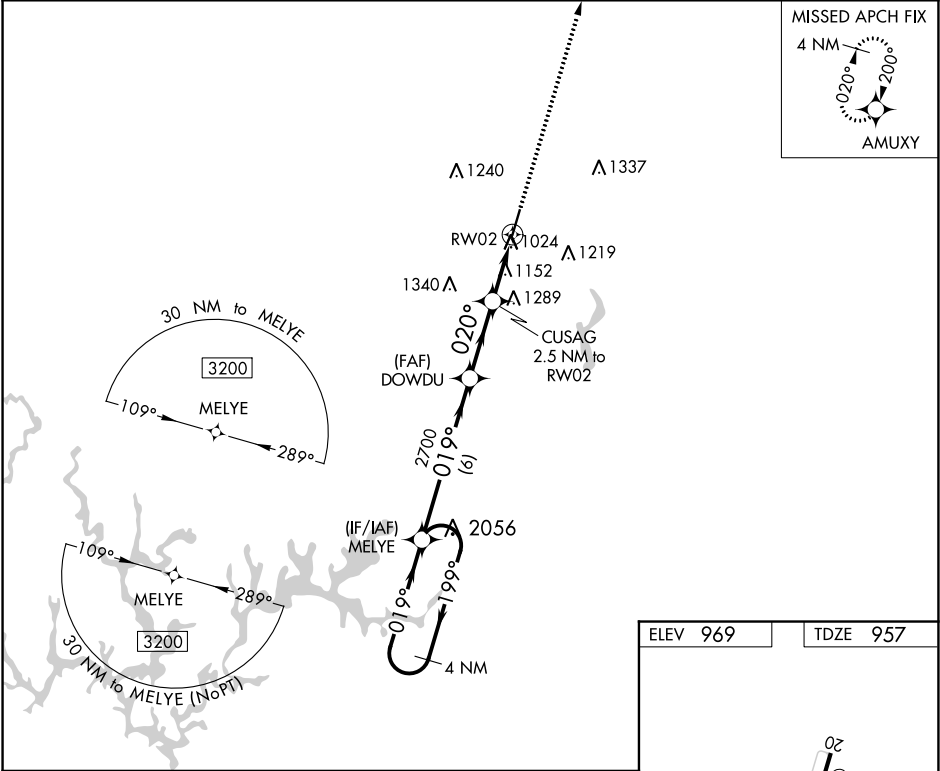
|  |                        |   |
|--|------------------------|---|
| WAAS<br>CH <b>58235</b><br><b>W02A</b> | APP CRS<br><b>020°</b> | Rwy Idg<br>TDZE <b>957</b><br>Apt Elev <b>969</b> |
|--|------------------------|---|

RNAV (GPS) RWY 2  
CULLMAN RGNL-FOLSOM FIELD (CMD)

**⚠** DME/DME RNP-0.3 NA. When local altimeter setting not received, use Huntsville Intl-Carl T. Jones Field altimeter setting and increase all MDA 100 feet, and increase LP, LNAV Cat C and D visibility  $\frac{3}{8}$  SM, increase Circling Cat C and D visibility  $\frac{1}{4}$  SM. Rwy 2 helicopter visibility reduction below 1 SM NA. Straight-in and Circling Rwy 2 NA at night.

**MISSSED APPROACH:**  
Climb to 3700 direct AMUXY and hold.

|                            |   |                       |                                 |
|----------------------------|---|-----------------------|---------------------------------|
| AWOS-3PT<br><b>124.175</b> | HUNTSVILLE APP CON ★<br><b>118.05 239.0</b> | GCO<br><b>121.725</b> | UNICOM<br><b>122.8 (CTAF) 0</b> |
|----------------------------|---|-----------------------|---------------------------------|



| CATEGORY |          | A                     | B                     | C  | D  |
|----------|----------|-----------------------|-----------------------|--|--|
| LP       | MDA      | 1420-1                | 463 (500-1)           | 1420-1 $\frac{3}{8}$                               | 463 (500-1 $\frac{3}{8}$ )                         |
| LNAV     | MDA      | 1440-1                | 483 (500-1)           | 1440-1 $\frac{3}{8}$                               | 483 (500-1 $\frac{3}{8}$ )                         |
| <b>C</b> | CIRCLING | 1440-1<br>471 (500-1) | 1500-1<br>531 (600-1) | 1600-1 $\frac{3}{4}$<br>631 (700-1 $\frac{3}{4}$ ) | 1640-2 $\frac{1}{4}$<br>671 (700-2 $\frac{1}{4}$ ) |

SE-4, 31 DEC 2020 to 28 JAN 2021

SE-4, 31 DEC 2020 to 28 JAN 2021