

|            |         |          |      |
|------------|---------|----------|------|
| VORTAC MVC | APP CRS | Rwy Idg  | 5004 |
| 116.8      | 095°    | TDZE     | 259  |
| Chan 115   |         | Apt Elev | 259  |

VOR/DME RWY 10

EVERGREEN RGNL/MIDDLETON FIELD (GZH)

⚠

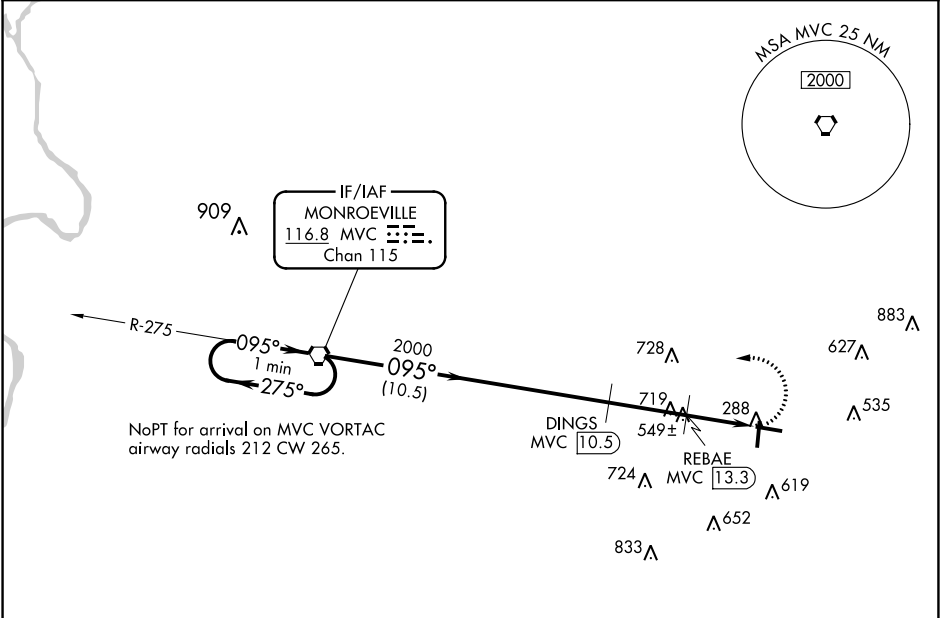
When local altimeter setting not received, use Andalusia/Opp altimeter setting and increase all MDAs 100 feet, and visibility S-10 Cat C/D ½ SM, Circling Cat C ¾ SM and Circling Cat D ½ SM. DME required. Rwy 10 helicopter visibility reduction below 1 SM NA. Straight-in Rwy 10 NA at night, Circling Rwy 10, 19 NA at night.

MISSED APPROACH:

Climbing left turn to 2000

direct MVC VORTAC and hold.

|         |                     |                |
|---------|---------------------|----------------|
| ASOS    | JACKSONVILLE CENTER | UNICOM         |
| 133.425 | 134.15 338.3        | 122.7 (CTAF) 0 |



ELEV 259

TDZE 259

095° 5.4 NM from FAF

61

5004 X 150

28

1

VGSI and descent angles not coincident (VGSI Angle 3.00/TCH 51).

2000

MVC

One Minute Holding Pattern

MVC VORTAC

DINGS MVC 10.5

REBAE MVC 13.3

MVC 15.9

2000

275°

095°

095°

2000

1080

2.97°

TCH 51

10.5 NM

2.8 NM

2.6 NM

| CATEGORY | A     | B           | C            | D            |
|----------|-------|-------------|--------------|--------------|
| S-10     | 800-1 | 541 (600-1) | 800-1½       | 541 (600-1½) |
| CIRCLING | 800-1 | 541 (600-1) | 840-1½       | 980-2¼       |
|          |       |             | 581 (600-1½) | 721 (800-2¼) |

MIRL Rwy 1-19 and 10-28 0