

WAAS CH <b>40033</b> <b>W08A</b>	APP CRS <b>084°</b>	Rwy Idg <b>5004</b> TDZE <b>170</b> Apt Elev <b>176</b>
--	------------------------	---

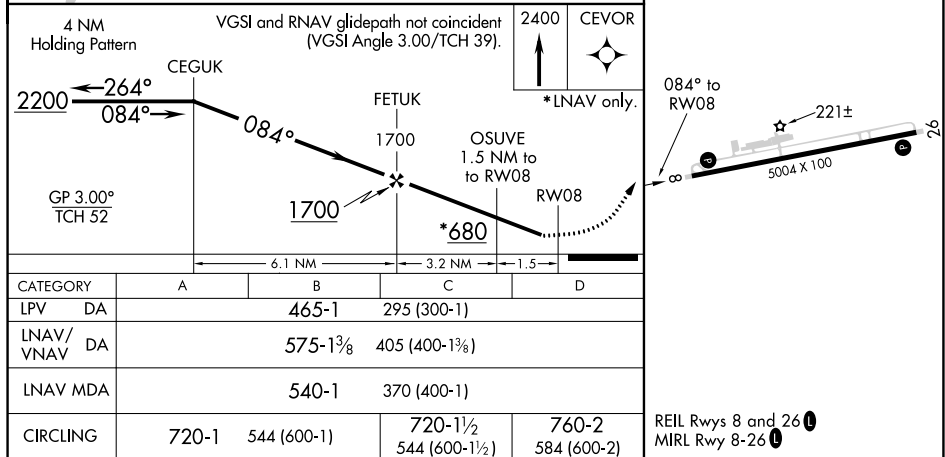
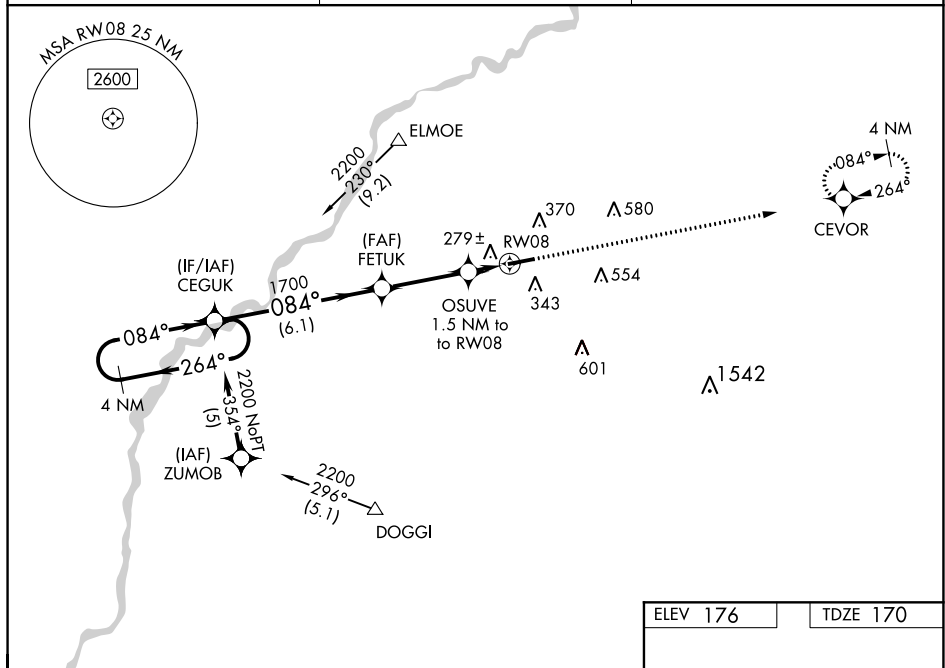
# RNAV (GPS) RWY 8

## CAMILLA-MITCHELL COUNTY (CXU)

**Baro-VNAV NA** when using Albany altimeter setting. For uncompensated Baro-VNAV systems, LNAV/VNAV NA below -15°C (5°F) or above 54°C (130°F). DME/DME RNP-0.3 NA. When local altimeter setting not received, use Albany altimeter setting and increase all DA 48 feet and all MDA 60 feet; increase LPV and LNAV/VNAV visibility ½ mile and increase LNAV Cat C and D and Circling Cat C visibility ¼ mile. Helicopter visibility reduction below 1 SM NA. Rwy 8 Straight-in and Circling minimums NA at night.

**MISSED APPROACH:**  
Climb to 2400 direct  
CEVOR and hold.

AWOS-3T <b>118.675</b>	JACKSONVILLE CENTER <b>125.75 226.8</b>	UNICOM <b>122.8 (CTAF) ①</b>
---------------------------	--	---------------------------------



CATEGORY		A	B	C	D
LPV	DA		465-1	295 (300-1)	
LNAV/ VNAV	DA		575-1 $\frac{3}{8}$	405 (400-1 $\frac{3}{8}$ )	
LNAV	MDA		540-1	370 (400-1)	
CIRCLING		720-1	544 (600-1)	720-1 $\frac{1}{2}$ 544 (600-1 $\frac{1}{2}$ )	760-2 584 (600-2)