

ILS or LOC RWY 27
COBB COUNTY INTL-McCOLLUM FIELD (RYY)

MISSED APPROACH: Climb to 1600 then climbing right turn to 4000 on heading 050° and ATIS VORTAC R-351 to FENTS INT/RMG 26.2 DME and hold, continue climb-in-hold to 4000.

▼ Circling to Rwy 9 NA at night. When local altimeter setting not received, use Hartsfield-Jackson Atlanta Intl altimeter setting and increase all DA/MDA 60 feet; increase S-LS 27 all Cats and CUMAV fix minimums S-LOC 27 Cats C and D visibility $\frac{1}{2}$ mile; increase S-LOC 27 Cat B, Circling Cat C, and CUMAV fix minimums Circling Cat C visibility $\frac{1}{2}$ mile; increase S-LOC 27 Cats C and D visibility $\frac{1}{2}$ mile.

115.4 RMG
Chan 101

R-090

FENTS INT
RMG 26.2

144°

324°

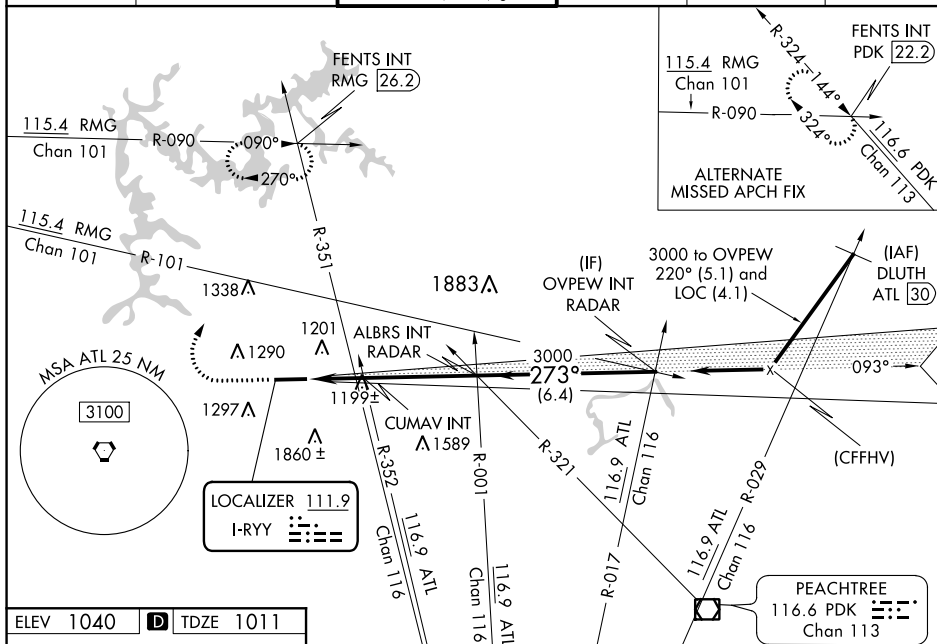
115.4 RMG
Chan 101

R-090

FENTS INT
PDK 22.2

116.6 PDK
Chan 113

ALTERNATE
MISSED APCH FIX



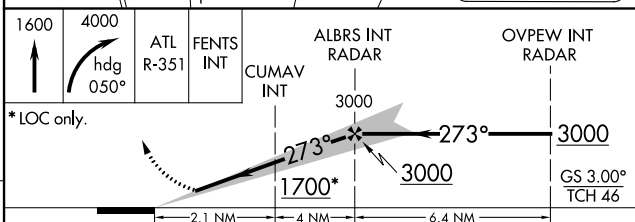
273° 6.1 NM
from FAF

TWR
1168

6295 X 100

0.7% UP

6 27



CATEGORY	A	B	C	D
S-ILS 27	1211-3/4 200 (200-3/4)			
S-LOC 27	1700-1	689 (700-1)	1700-2	689 (700-2)
CIRCLING	1780-1	740 (800-1)	1780-2 740 (800-2)	2220-3 1180 (1200-3)
CUMAV FIX MINIMUMS (DUAL VOR RECEIVERS REQUIRED)				
S-LOC 27	1460-1	449 (500-1)	1460-1 3/8	449 (500-1 3/8)
CIRCLING	1780-1	740 (800-1)	1780-2 740 (800-2)	2220-3 1180 (1200-3)