


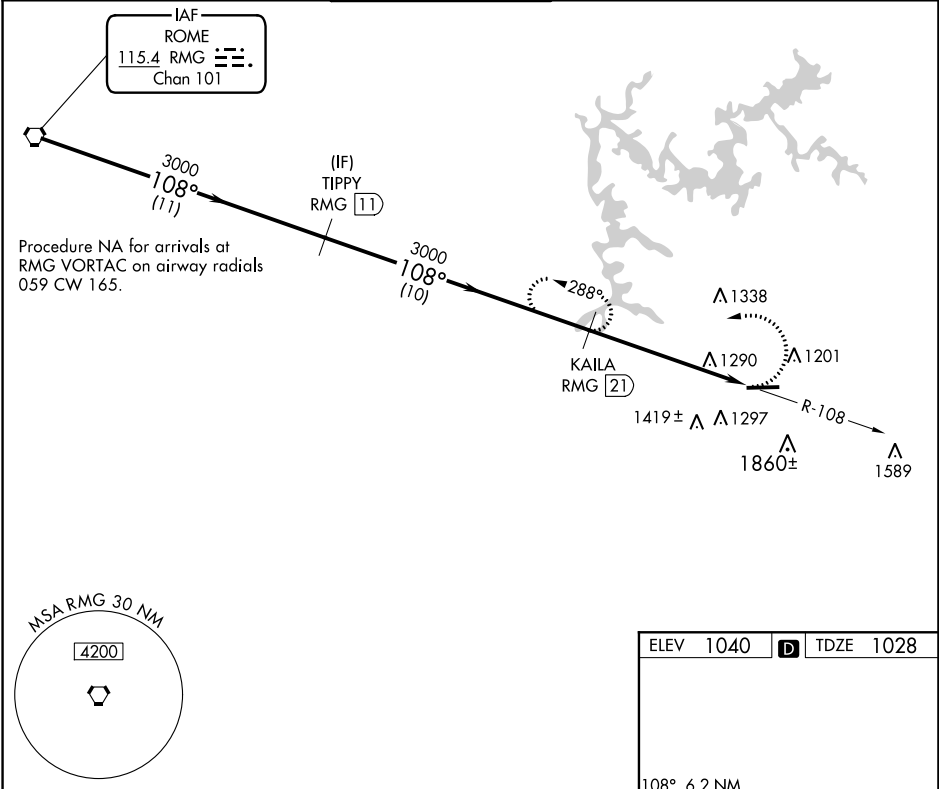
VORTAC RMG	APP CRS	Rwy ldg
115.4	108°	5233
Chan 101		TDZE 1028
		Apt Elev 1040

VOR/DME RWY 9

COBB COUNTY INTL-McCOLLUM FIELD (RYY)

 NA	Helicopter visibility reduction below 1 SM NA. When local altimeter setting not received, use Hartsfield-Jackson Atlanta Intl altimeter setting and increase all MDA 60 feet and S-9 Cat A/C/D and Circling Cat A/C visibilities ¼ mile. Night landing: Rwy 9 NA.	MISSED APPROACH: Climbing left turn to 3000 via heading 240° and RMG R-108 to KAILA/21 DME and hold.
---	---	--

ATIS 128.125	ATLANTA APP CON 121.0 268.7	McCOLLUM TOWER* 125.9 (CTAF) 0	GND CON 119.0	CLNC DEL 119.0 268.7	UNICOM 122.7
------------------------	---------------------------------------	--	-------------------------	--------------------------------	------------------------



	RMG VORTAC	TIPPY RMG 11	KAILA RMG 21	
Procedure Turn NA	3000	3000	3000	
VGSI and descent angles not coincident (VGSI Angle 4.00/TCH 46).	108°	108°	108°	
	11 NM	10 NM	6.2 NM	
CATEGORY	A	B	C	D
S-9	1900-1 872 (900-1)	1900-1¼ 872 (900-1¼)	1900-2½ 872 (900-2½)	1900-2¾ 872 (900-2¾)
CIRCLING	1900-1 860 (900-1)	1900-1¼ 860 (900-1¼)	1900-2½ 860 (900-2½)	2220-3 1180 (1200-3)

