

WAAS CH 72614 W05A	APP CRS 055°	Rwy Idg TDZE 360 Apt Elev 361
--	------------------------	---

RNAV (GPS) RWY 5

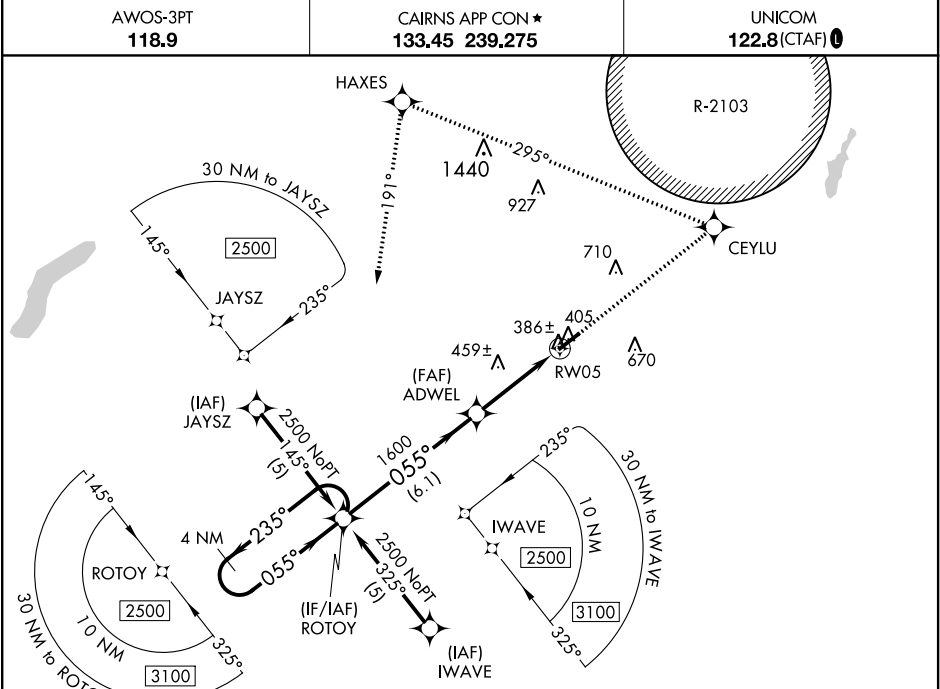
ENTERPRISE MUNI (EDN)

T

A

Baro-VNAV NA. For uncompensated Baro-VNAV systems, LNAV/VNAV NA below -15°C (5°F) or above 54°C (130°F). DME/DME RNP-0.3 NA. Use Cairns AAF (Fort Rucker) altimeter setting.

MISSED APPROACH: Climb to 2500 direct CEYLU and left turn via track 295° to HAXES and left turn via track 191° to ROTOY and hold.



4 NM Holding Pattern ROTOY

2500 CEYLU tr 295° HAXES tr 191° ROTOY

2500 ← 235° 055° → 055° 1600 RW05

GP 3.00° TCH 40

VGSI and RNAV glidepath not coincident (VGSI Angle 3.00/TCH 50).

6.1 NM 3.8 NM

CATEGORY	A	B	C	D
LPV DA	642-1 282 (300-1)			NA
LNAV/VNAV DA	688-1¼ 328 (400-1¼)			NA
LNAV MDA	760-1 400 (400-1)			NA
CIRCLING	860-1 499 (500-1)		860-1½ 499 (500-1½)	NA

ELEV 361 TDZE 360

5080 X 100

055° to RW05

REIL Rwys 5 and 23

MIRL Rwy 5-23